

Increasing **the Yield** and Improving the **Quality of** **Flour**

By Halit Shasheet

Tanis Milling Technologies

COMPANY PROFILE

TANIS MACHINE TECHNOLOGIES

tanis.com.tr



YEARS IN MILLING





TANIS GROUP



YEARS IN MILLING



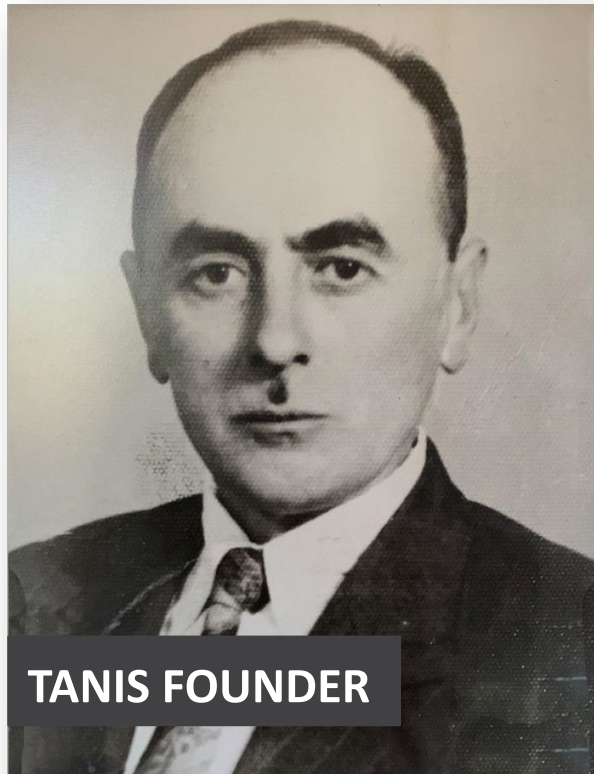


33.000m²
FACTORY
ONE OF THE
LARGEST IN THE
SECTOR IN TURKEY



1st Generation

Ali Kemal TAN



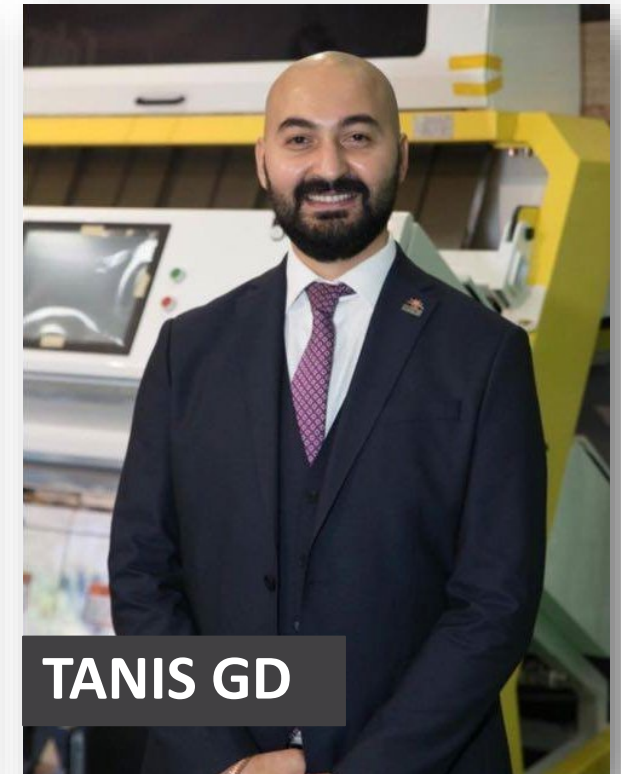
2nd Generation

Kemal TAN



3rd Generation

Emre Tan



MORE THAN **300** EMPLOYEE



LASER CUTTING CENTER



CNC MACHINING CENTRES



BENDING MACHINES CENTER



PAINT WORKSHOP





TANIS
MILLING TECHNOLOGIES

CARPENTER WORKSHOP



YEARS IN MILLING







PACKING AND SHIPPING





PRODUCT & SERVICES



Complete Turnkey
Wheat Flour And Semolina Mills



Complete Turnkey
Maize Flour And Semolina Mills



Complete Turnkey
Animal Feed Mills



Lentil And Pulses Factories



Complete **Storage** Facilities



Steel Structure Construction
For Agro Industries



Color Sorting Machines/
Optical Sorters



Complete Integrated
Food Complex Projects



COMPLETE TURNKEY WHEAT FLOUR AND SEMOLINA MILLS

Wheat flour, samolina mills in vertical, horizontal design, steel or concrete structure compact or constructed type projects. Different flour production plants for pastry, bakery, bread, biscuit industries.





COMPLETE TURNKEY MAIZE FLOUR AND SEMOLINA MILLS

Regional Maize flour production lines. Specific high quality maize grits lines for Flaking grits, chips and snack grits etc.
Lowering the fat content 1% high capacity and extraction with optimum machine lines.





TANIS
MILLING TECHNOLOGIES

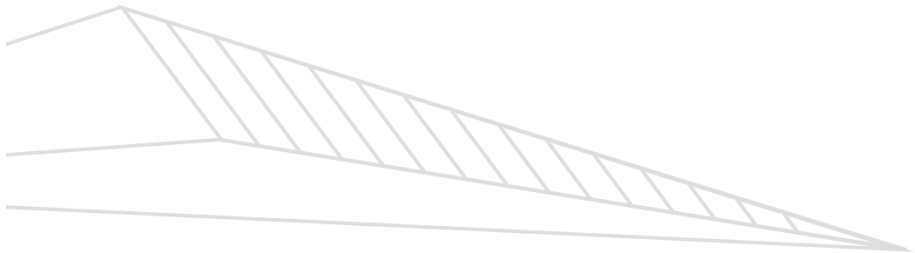


COMPLETE TURNKEY
ANIMAL FEED MILLS

High quality animal feed mills in compact or constructed design. Basic farm type economical feed milling solutions. Fully automated feed production lines for fattening, milk and poultry feeds.



67
YEARS IN MILLING





LENTIL AND PULSES FACTORIES

Seeds and Pulses cleaning, sorting,
packing lines.

Pulses, lentils, peas, beans peeling
and splitting lines together with
color sorting sections.

High quality seed cleaning
processes above 99.99+%

High extraction peeling for pulses
projects.

Fully automated systems

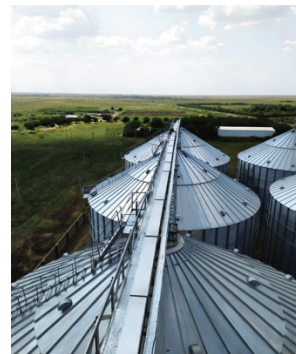
Sesame, Coffee, Lentils, wheat,
maize, soybean, white beans,
sorghum, teff, yellow peas, green
peas, mung beans etc. solutions.





COMPLETE STORAGE FACILITIES

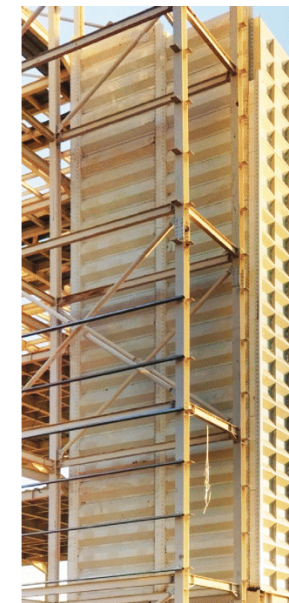
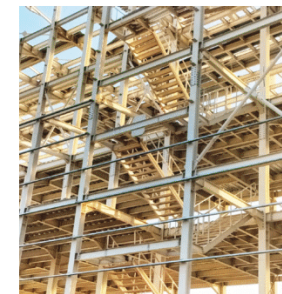
Conical or flat bottom, galvanized grain and pulses storage silos. Flour and finish product silos as well as the raw material storage systems. High capacity pre cleaning and handling systems. Complete solutions together with drying, handling, pre cleaning, monitoring and quality control equipments.





STEEL STRUCTURE CONSTRUCTION FOR AGRO INDUSTRIES

Complete steel buildings for flour mill sand general feed industry solutions. Hangar type buildings, multy store milling structures. Complete buildings with the process silos. Steel chasee works for compact milling solutions. Extension / Expansion projects to the existing buildings.





COLOR SORTING MACHINES / OPTICAL SORTERS

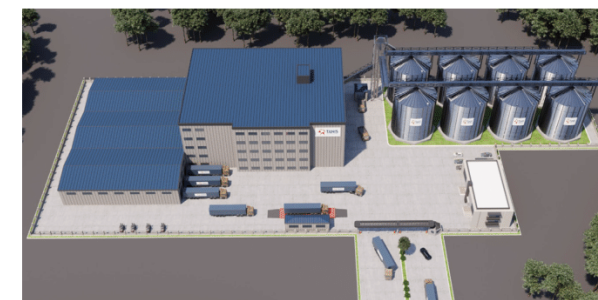
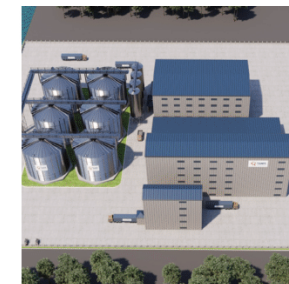
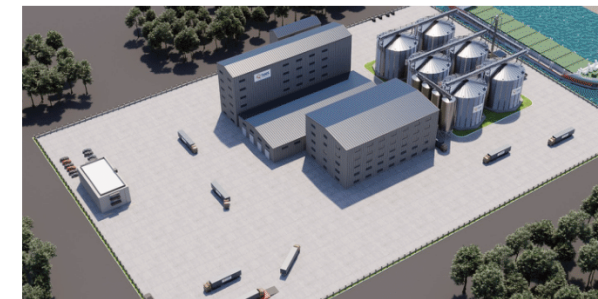
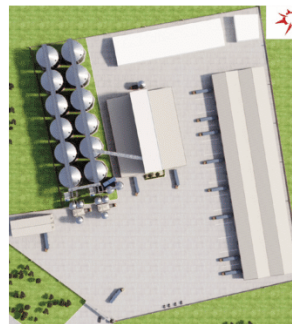
Optical sorting systems for general food and plastic industries.
X-ray, belt type, infra-red sorting solutions.





COMPLETE INTEGRATED FOOD COMPLEX PROJECTS

Food complex projects
Engineering from green field to
complete integrated processing
systems.
Project management and
consultation services for general
food industries.
Servicing for flour, bakery, biscuit,
pasta and macaroni, baby food,
mix flour, feed and storage systems
solution as a complete facility.



Increasing **the Yield** and Improving the **Quality of** **Flour**

By Halit Shasheet

Tanis Milling Technologies



Increasing the yield and improving the quality of wheat flour involves a combination of *agricultural, milling, and processing practices*. Here are several ways to achieve these goals:



Increasing the yield and improving the quality of wheat flour

There are several ways to Increase the yield and improve the quality of wheat flour

In that presentation, we will highlight some of them



Agricultural

1. Selecting High-Quality Wheat Varieties:

Begin with the selection of wheat varieties that are known for their high yield and superior flour quality characteristics, such as protein content and gluten strength.

2. Optimal Growing Conditions:

Ensure wheat is grown in the right soil type, climate, and geographical region for optimal yield and quality.

Implement proper irrigation and nutrient management to maximize wheat growth and yield.

3. Crop Management:

Use modern farming techniques, including proper crop rotation and pest/disease management, to maintain the health and quality of the wheat crop.

Harvesting and Storage



- Harvest wheat at the right stage of maturity to preserve grain quality.
- Use appropriate storage methods to prevent contamination and maintain wheat quality.



Milling Techniques

- Invest in high-quality milling equipment and technology.
- Properly clean and prepare wheat grains before milling.
- Fine-tune milling settings to achieve the desired particle size and flour consistency.
- Avoid excessive heat during the milling process to preserve protein and enzyme content.



One more was developed by
Tanis Milling Technologies
Increasing the Yield and Improving the Quality of
Flour

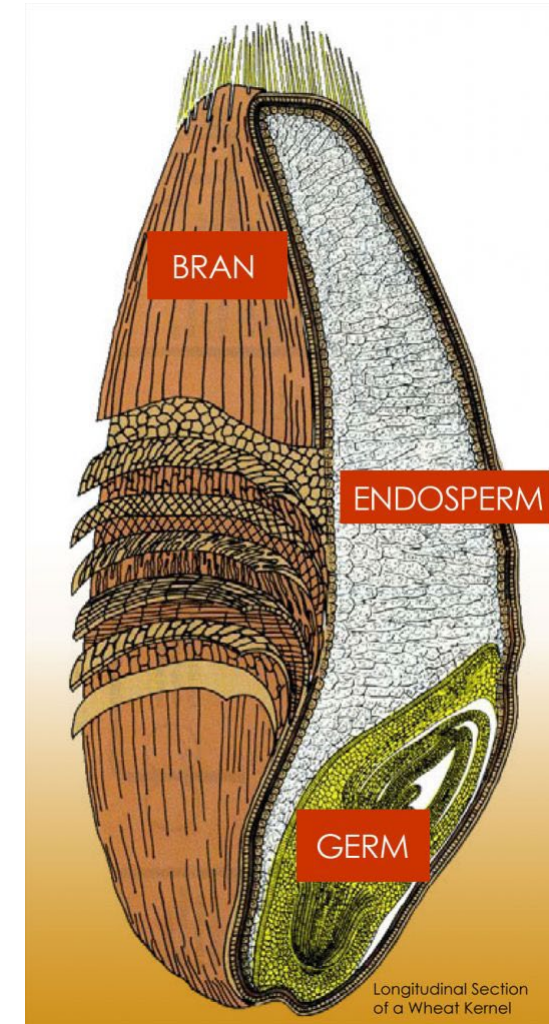
New Type Intensive Granite Peeler

The Intensive Granite Peeler (IGP) is an innovative wheat cleaning process that offers three advantages to both **new and existing milling plants.**



New Type Intensive Granite Peeler

Utilizing the Intensive Granite Peeler (IGP), which involves the peeling and scouring of the exterior of dry wheat using a specially blended Granite cylinder, we can achieve an extraction rate increase of up to 1%. This enhancement occurs because when we scratch the wheat's surface, it facilitates greater water penetration into the wheat and separates the endosperm from the bran more easily.



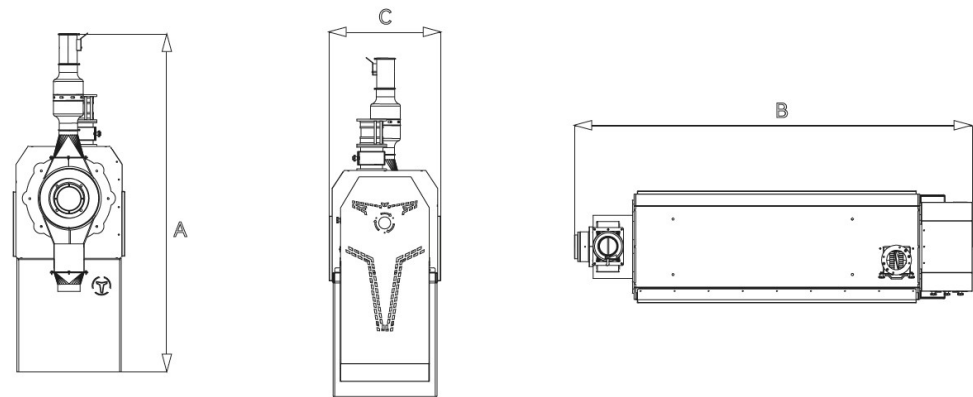
New Type Intensive Granite Peeler

We enhance wheat purification by eliminating as much as 80% of organic contaminants, including bacteria and fungi, and up to 50% of mycotoxins. This thorough cleaning of the wheat takes place prior to introducing water, resulting in a notable improvement in the hygiene of both flour and bran.

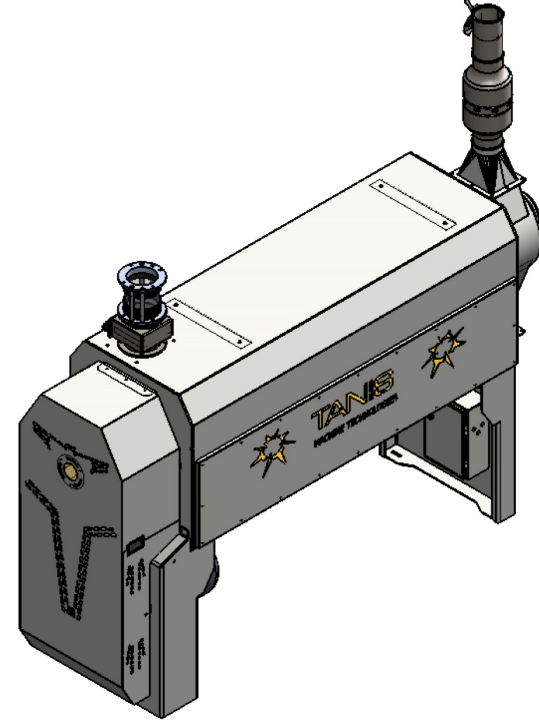
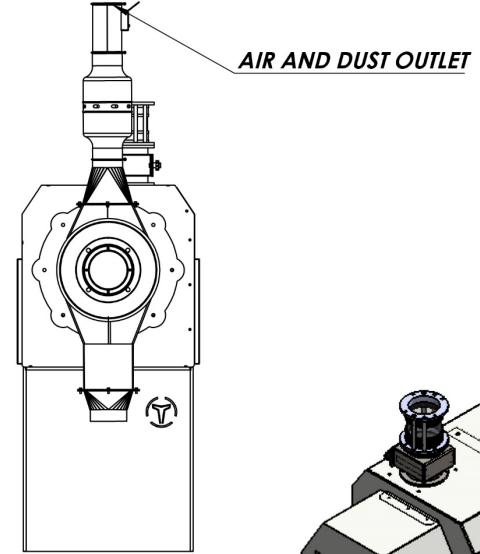
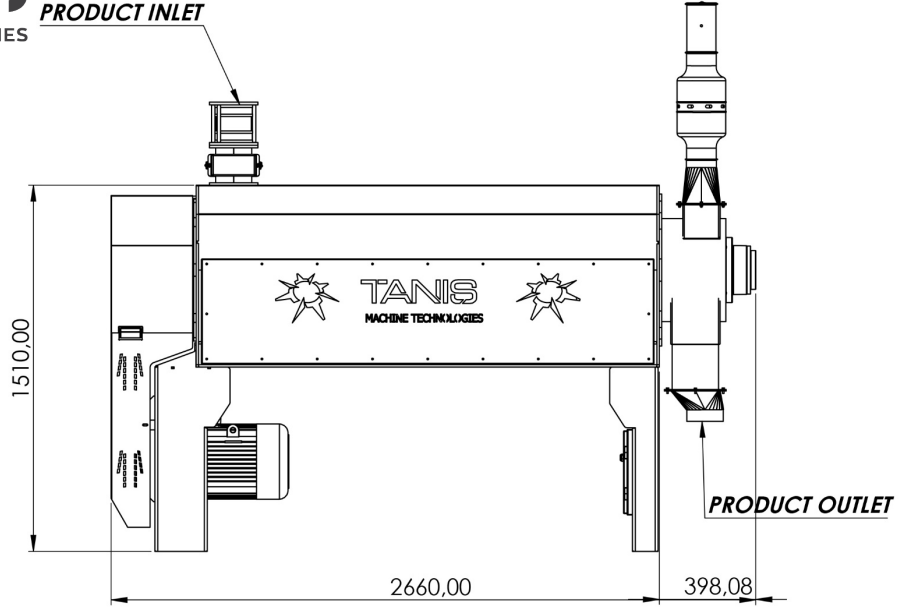


New Type Intensive Granite Peeler


faster, more thorough, and uniform water absorption. Wheat treated with IGP retains more moisture during the milling process, reducing evaporation levels and achieving consistent final flour moisture content while saving 1% of the water used in conditioning. This leads to a 25% reduction in the required resting time.



Model	Dimension (mm)						Capacity t/h	Motor kw	Weight kg		Gross Volume m³
	A	B	C	øD	E	F			Net	Gross	
TMKS-3210	2080	2010	600	200	150	120	8	11	800	900	2,5
							12	18,5			
TMKS-4016	2265	2660	750				14	18,5	1400	1500	4,5
							22	30			

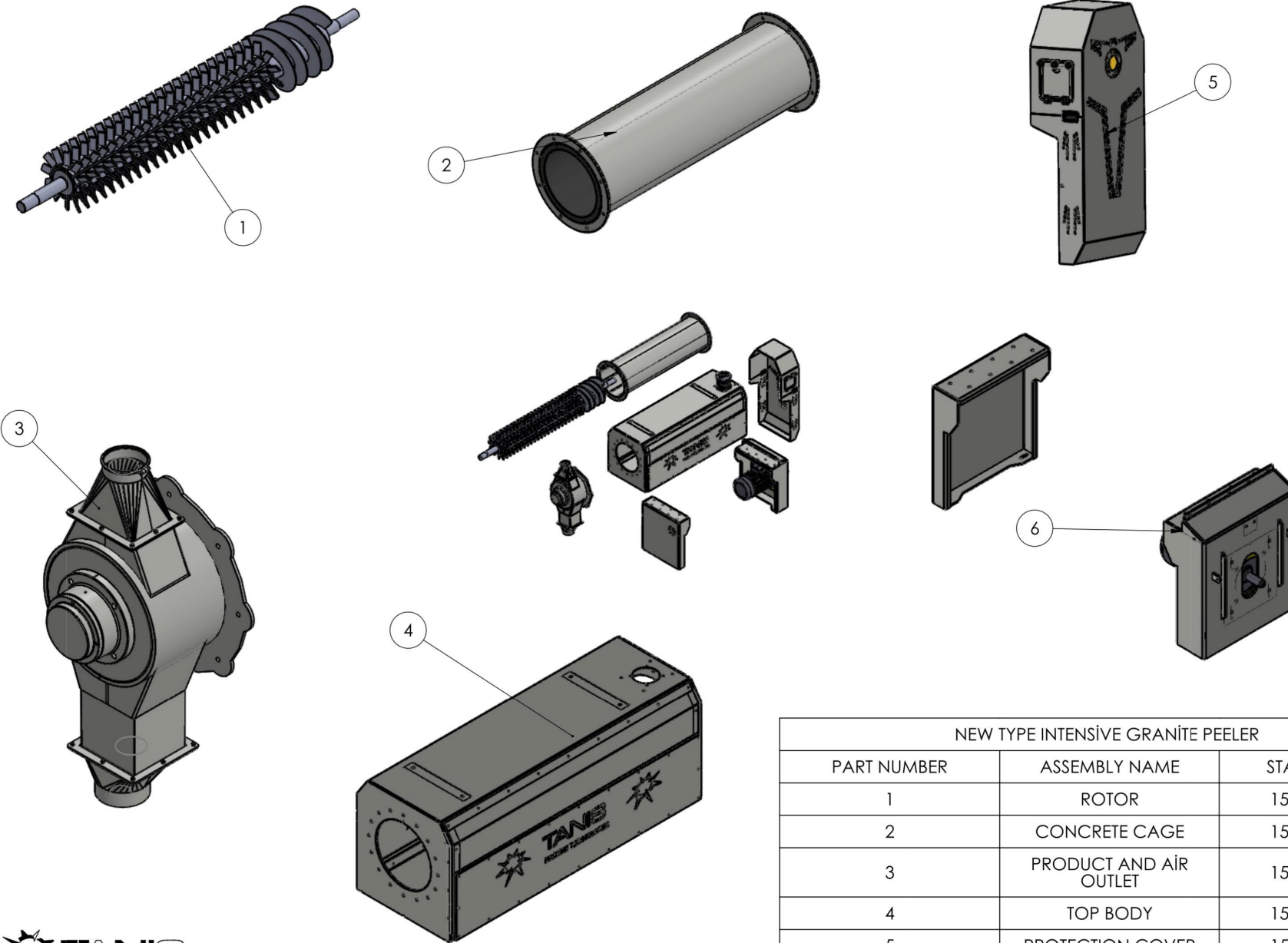


Çizim Yolu : C:\EPDM\EPDM_PROJE\PROTOTIP MAKINALAR\YATAY KABUK SOYUCU Modelleri\TMS-40\1250 OVALAMA\T.R. Yolu : C:\Users\insipje\Desktop\

		NAME-SURNAME	DATE	İMZA
		DRAWN BY	Muhammet Y.YAVUZ	2.02.2023
NAME		PREPARED BY	Hüseyin ŞAHİN	
		CONTROL	İbrahim.H.YALÇINKAYA	
PAGE		CONFIRMATION BY	Emre TAN	
		REV. NU	REV. TARİH	
FINISHING		GROUP NAME	INTENSIVE GRANITE PEELER	SCALE
RAW MATERIALS				1:50

Aksi belirtilmedikçe ölçüler "mm" dir. Keskin Köşeleri kınınz ve pahlayınız. Bu çizim ve tasarımın her hakkı saklıdır. Herhangi bir amaçla kopyalanamaz veya çoğaltılamaz.

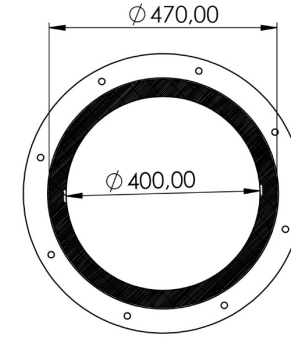
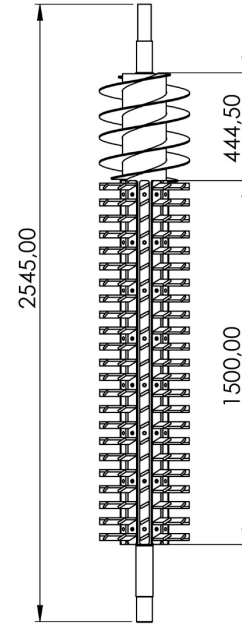
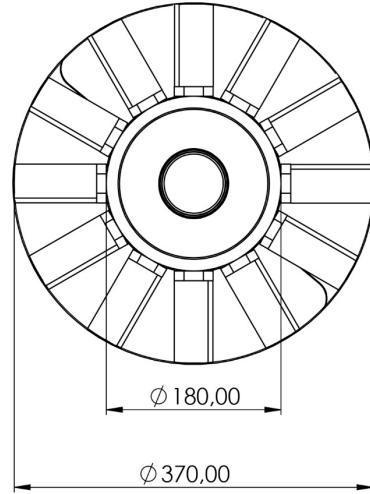
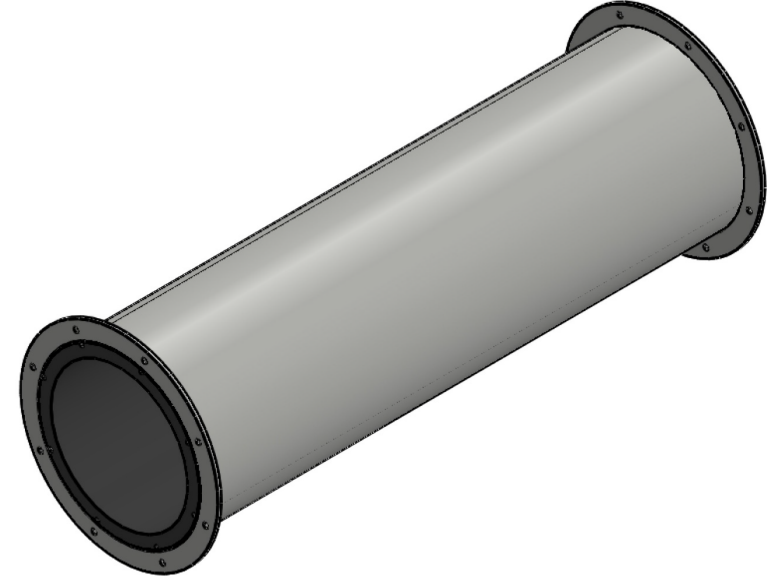
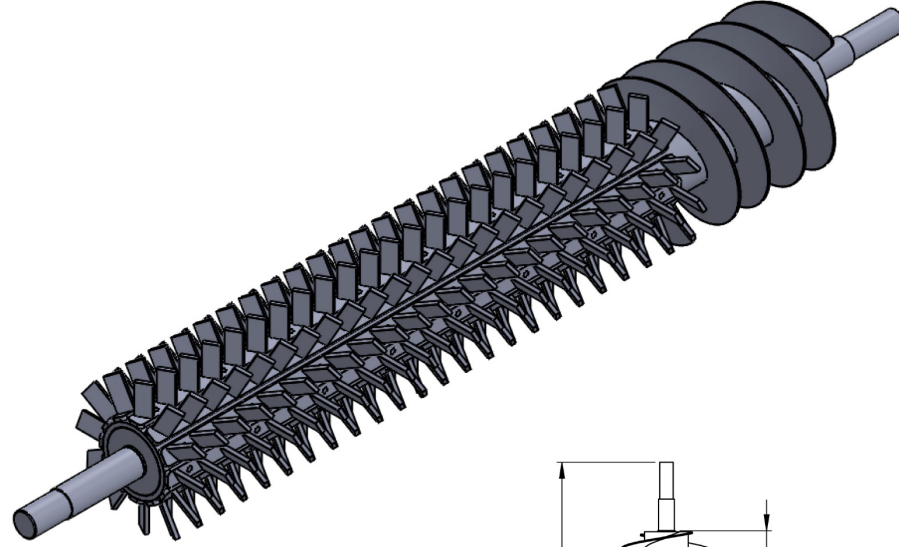
VERİLMİYEN TOLARANSLAR İÇİN ISO 2768 GEÇERLİDİR.



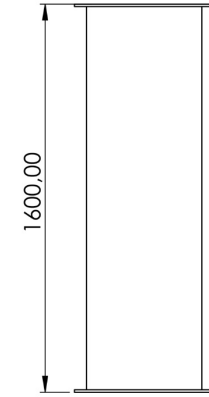
NEW TYPE INTENSİVE GRANİTE PEELER

PART NUMBER	ASSEMBLY NAME	STANDARD NU
1	ROTOR	15-0490-00-00
2	CONCRETE CAGE	15-0480-00-00
3	PRODUCT AND AIR OUTLET	15-0470-00-00
4	TOP BODY	15-0460-00-00
5	PROTECTION COVER	15-0450-00-00
6	LOWER CHASSIS	15-0440-00-00

Çizim Yolu : T:\PROJE\0.GEÇİCİ DEPO\MEHMET BAYRAM\
İ.E. Yolu : C:\Users\insp\pe\deskop\




KESİT A-A
ÖLÇEK 1 : 10



Çizim Yolu : C:\EPDM\EPDM_PROJE\PROTOTIP MAKİNALAR\YATAY KABUK SOYUCU Modeller\TMS-40X1250 OVALAMA\

İ.E. Yolu :

			ADI SOYADI	TARİH	İMZA
ADİ			ÇİZEN	24/03/2020	
01.01.KS313.07.00.00.00 - 313-OVLM-KTM_1250			HAZIRLAYAN		
SAYFA			KONTROL		
ADET			ONAY		
MALZEME			REVİZYON		
RESİM NO			REV. NO	REV. TARİH	
SON İŞLEM			GRUP ADI	YATAY KABUK SOYUCU	ÖLÇEK
HAMMADDE					1:20

Aksi belirtilmedikçe ölçüler "mm" dir. Keskin Köşeleri kınız ve pahlayınız. Bu çizim ve tasarımın her hakkı saklıdır. Herhangi bir amaçla kopyalanamaz veya çoğaltılamaz.

VERİLMEYEN TOLERANSLAR İÇİN ISO 2768 GEÇERLİDİR.



Vertical Peeling Machine

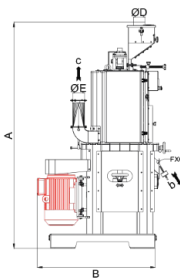
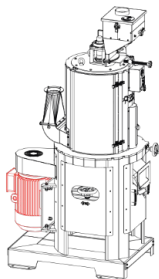
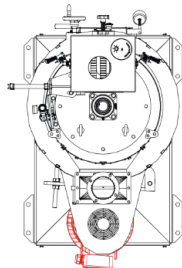
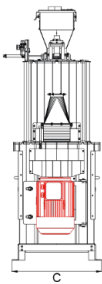
The vertical peeling machine is used in pulses processing plants to remove the outer layer of the product from the seed. It has a solid structure and long working life with minimum noise and product loss. The motor speed is adjustable and the peeling stone/net can be interchanged easily. This machine is aesthetically pleasing, easy to operate, and requires minimum maintenance.



TANIS
MILLING TECHNOLOGIES



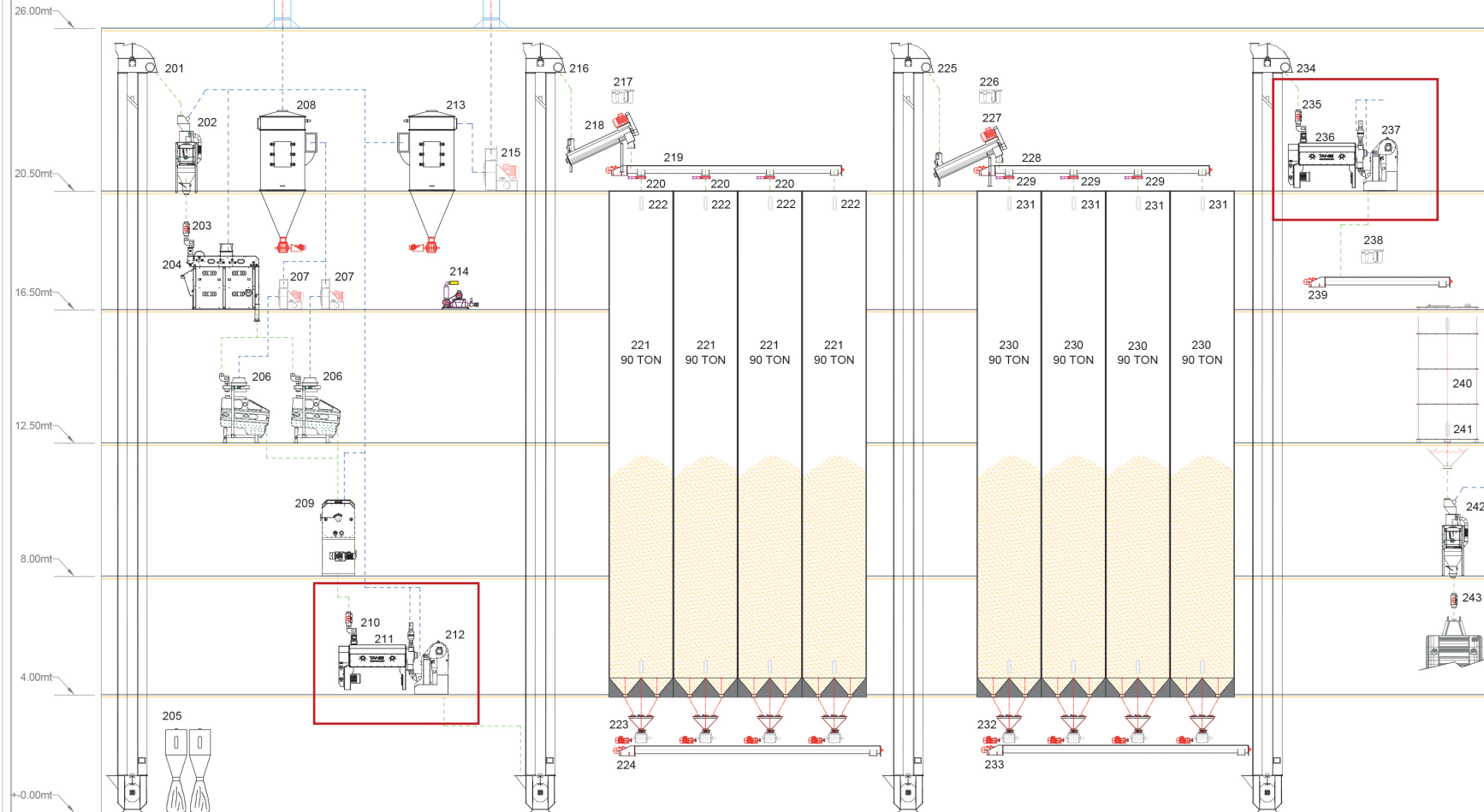
YEARS IN MILLING



Model	Dimension (mm)						Technical Specifications				
	A	øB	øC	D	E	FxG	Capacity t/h	Motor kw	Weight kg		Gross Volume m³
							Lentil		Net	Gross	
TDKS-7x22	2344	2008	50	ø120	ø120	240x100	2,3	22	650	750	4
TDKS-5x15	2180	1100	750				1,5-2	15	550	650	3,5



New Type Intensive Granite Peeler



200-CLEANING SECTION LINE 1&2 (EACH LINE 18-20t/h capacity)

234-246 - PREPARATION SECTION LINE 1&2 (EACH LINE 15t/h capacity)

2x360 TPD WHEAT GRINDING CAPACITY FLOUR MILL WITH 28+4 ROLLERS			
	NAME	DATE	SING
DRAWN	A.YILDIRIM	22.08.2023	
CONTROL	EMRE TAN	22.08.2023	
APPROVED	EMRE TAN	22.08.2023	
SCALE			
1/1	REF.NUM: 230448		

THOR Roller Mill

- Available in the double dock.
- Available in 100 / 125 / 150 cm long.
- Available in 250 / 300 Roll diameter.
- Vertical Pressure system.
- 95% bolt connection.
- Less welding to avoid corrosion and increase accuracy.
- The feeding roller can easily be opened for cleaning, so there is no need to dismantle it.
- Rolls can be replaced in 10-15 mins.
- All surfaces in contact with the product are made of food-grade special aluminium.



- Available 2/4/6/8/10 Sections.
- Available in up to 32 sieves.
- Available in 67/74/84 or any other sizes.
- Upper and bottom sheets are made of one piece no welding on.
- 95% bolt connection.
- Less welding to avoid corrosion and increase accuracy.



65
YEARS
IN
MILLING

TURNKEY
WHEAT FLOUR
MILL



TITANUS

SQUARE SIEVE

www.tanis.com.tr



- Noiseless working condition
- Simple cleaning process and hygienic working conditions
- Quick and easy to change sieves with high capacity-extended screening area
- Adjustable sifting speed
- Minimum maintenance and trouble-free operation
- Effective cleaning using a brush
- Light metallic sieve frames with adjustable clamping device



65
YEARS
IN
MILLING

TURNKEY
WHEAT FLOUR
MILL



www.tanis.com.tr

 **TANIS** SEED PROCESSING TECH.  **TANIS** FEED MILLING TECHNOLOGY  **sorton**

Revolutionizing

MAZE

With The Premier Technologie in The Sector!



Degerminator

- Flexible production efficiency setting
- High yield and quality product
- Fat content falling below 1% in the final product
- Wide production scenarios, adjustable quality of end products



65
YEARS
IN
MILLING

TURNKEY
MAIZE FLOUR MILL



DEGERMINATOR

www.tanis.com.tr

 **TANIS**
SEED PROCESSING TECH.

 **TANIS**
FEED MILLING TECHNOLOGY

 **sorton**

Super Cleaner

- The super cleaning machine cleans dry grains precisely and efficiently, separating them from organic and inorganic impurities using a vacuum room.
- Suitable for various agricultural products, the machine features a flexible design, low maintenance, noiseless operation, high capacity, and low power consumption.
- It has a vibration-free operation and can be easily adjusted for different types of seed processing.



Color Sorter

- Camera system - 5th Generation 280 Megapixel specially designed camera system
- 4th Generation FPGA Roses System - Serial data processing speed and efficiency can be achieved by this system.
- Nikon Lens - Performance with high-end CCD sensor and lens
- above user satisfaction
- Fast pass adaptation for sorting different materials
- Lower waste system with higher capacity
- User friendly interface design
- High-performance product yield supported by the best nano-chi Hi-Tech electronics
- Best quality sequencing results with Pin-Point Targeting System Electromagnetic lifting system injectors



The image shows a white TANIS Color Sorter machine with a control panel and multiple sorting chutes. It is set against a dark background with vertical light streaks.

TANIS
MILLING TECHNOLOGIES

65
YEARS
IN
MILLING

TURNKEY
SEED
PLANT

www.tanis.com.tr

 **TANIS**
SEED PROCESSING TECH.

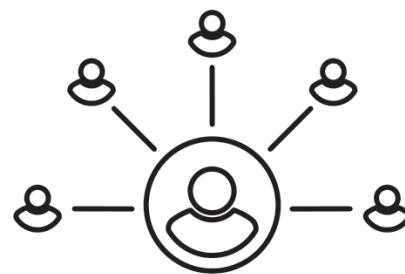
 **TANIS**
FEED MILLING TECHNOLOGY

 **sorton**

Hammer Mill

- The hammer mill is an essential tool for milling grains, cereals, and bran with high quality, efficiency, and longevity.
- It's ideal for feed mills, organic fertilizer plants, and extruders. The machine prioritizes hygiene, ease of use, and low maintenance, with a minimum sound level and energy consumption.
- It offers high performance, capacity, sensitivity, and security, and is designed to ensure quick part replacement time.
- The hammer mill is known for its excellence.





OUR REFERENCES

НАШИ РЕФЕРЕНЦИИ



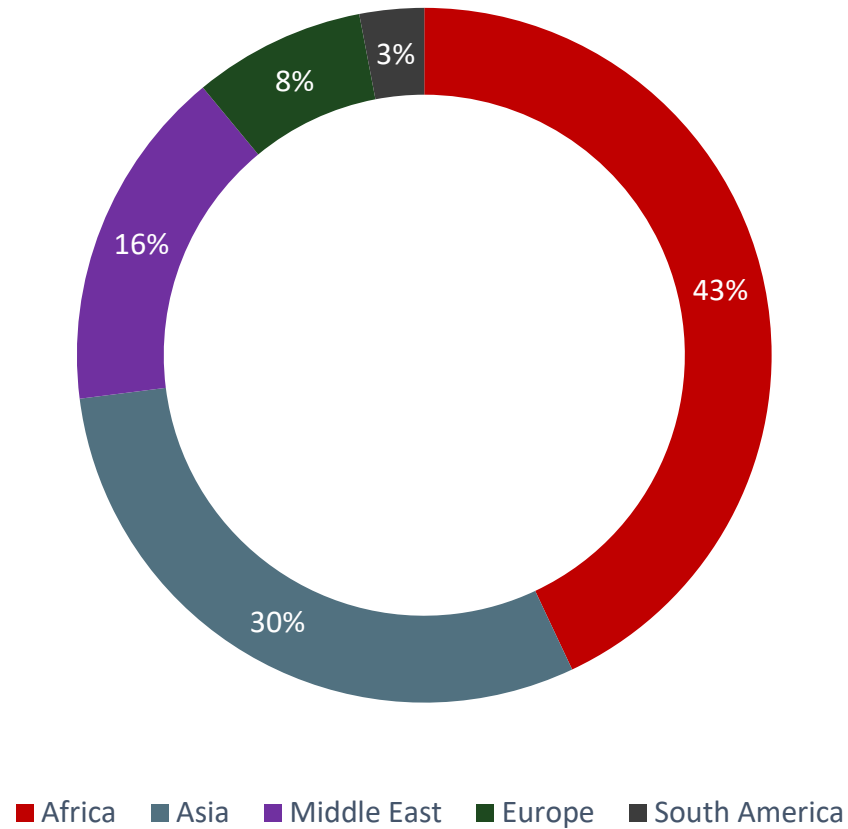


EXPORTS MAP

Exporting over 75 countries 6 International sales- after, spare parts and services offices available in (Africa, Middle East, Asia, and Latin America)

Экспорт в более чем 75 стран. 6 офисных продаж с запасными частями и сервисным обслуживанием. (Африка, Ближний Восток, Азия и Латинская Америка).

TANIS AROUND THE WORLD



AFRICA

ALGEIRA, ANGOLA, EGYPT, MOROCCO, ETHIOPIA, LIBYA, KENYA, SUDAN, UGANDA, SOUTH SUDAN

ASIA

ARMENIA, GEORGIA, KAZAKHISTAN, ÖZBEKİSTAN, AFGHANISTAN, BANGLADESH, PAKİSTAN.

MIDDLE EAST

IRAQ, SUUDI ARABIA, SYRIA, JORDAN, IRAN

EUROPE

TURKEY, RUSSIA, UKRAINE, ITALY, BULGARIA, GREECE, POLAND, ROMANIA, FINLAND

NORTH AND SOUTH AMERICA

COLOMBIA, ARGENTINA, CHILI, MEXICA, CANADA, VE, USA

SOUTH SUDAN
MAIZE/WHEAT FLOUR
500/100 TONS/DAY

ЮЖНЫЙ СУДАН
КУКУРУЗНАЯ МУКА
500 ТОНН/СУТКИ

2023



ANGOLA
WHEAT FLOUR
200 TONS/DAY

АНГОЛА
ПШЕНИЧНАЯ МУКА
200 ТОНН/СУТКИ

2021



SUDAN MENAGIL
WHEAT FLOUR
200 TONS/DAY

СУДАН МЕНАГИЛ
ПШЕНИЧНАЯ МУКА
200 ТОНН/СУТКИ

2022



ÇANAKKALE
WHEAT FLOUR
350 TONS/DAY

ЧАНАККАЛЕ
ПШЕНИЧНАЯ МУКА
350 ТОНН/СУТКИ

2022



KENYA
WHEAT/MAIZE FLOUR
120/120 TONS/DAY

КЕНИЯ
ПШЕНИЧНАЯ/
КУКУРУЗОВАЯ МУКА
120/120 ТОНН/СУТКИ

2020



SUDAN
SILO
6X5000 TONS/DAY

СУДАН
Силос
6X5000 ТОНН/СУТКИ

2022



ALGERIA
WHEAT FLOUR
3X100 TONS/DAY

АЛЖИР
ПШЕНИЧНАЯ МУКА
3X100 ТОНН/СУТКИ

2018



**ETHIOPIA
MAIZE FLOUR
150 TONS/DAY**

ЭФИОПИЯ
КУКУРУЗНАЯ МУКА
150 ТОНН/СУТКИ

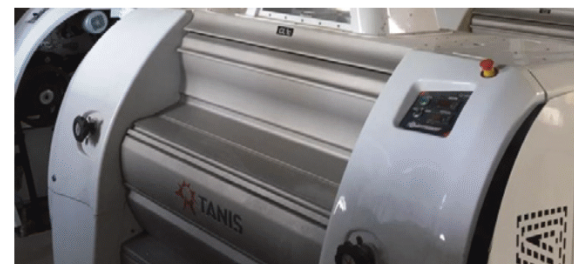
2019



**BANGLADESH
WHEAT FLOUR
150 TONS/DAY**

БАНГЛАДЕШ
ПШЕНИЧНАЯ МУКА
150 ТОНН/СУТКИ

2020



UZBEKISTAN
WHEAT FLOUR
60 TONS/DAY

ЎЗБЕКИСТАН
ПШЕНИЧНАЯ МУКА
60 ТОНН/СУТКИ

2021



Ongoing Project

Текущий проект



GIRESUN (TURKEY)
MAIZE SEMOLINA
2800 TONS/DAY

ГИРЕСУН (ТУРЦИЯ)
КУКУРУЗОВАЯ МУКА
2800 ТОНН/СУТКИ

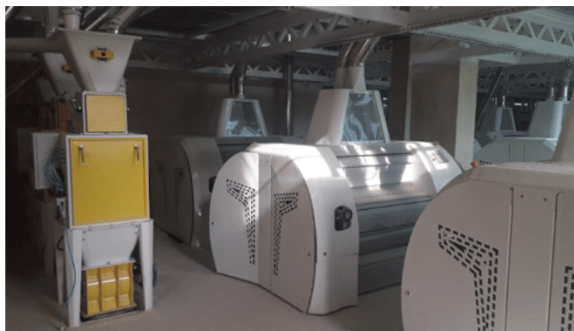
2018



**JORDAN
WHEAT FLOUR
450 TONS/DAY**

ИОРДАНСКАЯ
ПШЕНИЧНАЯ МУКА
450 ТОНН/СУТКИ

2018



**EGYPT
MAIZE FLOUR
120 TONS/DAY**

ЕГИПЕТ
КУКУРУЗНАЯ МУКА
120 ТОНН/СУТКИ

2018



ALGERIA
SEMOLINA
200 TONS/DAY

АЛЖИР
МАННАЯ КРУПА
200 ТОНН/СУТКИ

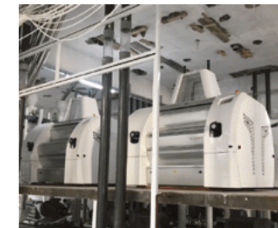
2018



K.MARAŞ (TURKEY)
MAIZE FLOUR
120 TON/DAY

МАРАШ (ТУРЦИЯ)
КУКУРУЗНАЯ МУКА
120 ТОНН/СУТКИ

2018



ETHIOPIA
MAIZE FLOUR
120 TON/DAY

ЭФИОПИЯ
КУКУРУЗНАЯ МУКА
120 ТОНН/СУТКИ

2018



ANGOLA
MAIZE FLOUR
200 TONS/DAY

АНГОЛА
КУКУРУЗНАЯ МУКА
200 ТОНН/СУТКИ

2014



LIBYA
WHEAT FLOUR
200 TONS/DAY

ЛИВИЯ
ПШЕНИЧНАЯ МУКА
200 ТОНН/СУТКИ

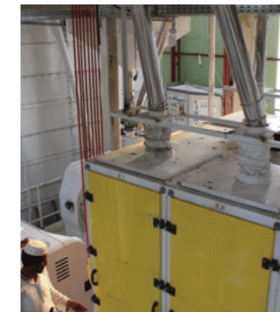
2017



BANGLADESH
WHEAT FLOUR
60 TONS/DAY

БАНГЛАДЕШ
ПШЕНИЧНАЯ МУКА
60 ТОНН/СУТКИ

2017



ALGERIA
WHEAT FLOUR
30 TONS/DAY

АЛЖИР
ПШЕНИЧНАЯ МУКА
30 ТОНН/СУТКИ

2017



LIBYA
WHEAT FLOUR
75 TONS/DAY

ЛИВИЯ
ПШЕНИЧНАЯ МУКА
75 ТОНН/СУТКИ

2016



RUSSIA
WHEAT FLOUR
75 TONS/DAY

РОССИЯ
ПШЕНИЧНАЯ МУКА
75 ТОНН/СУТКИ

2016



ROMANIA
WHEAT FLOUR
100 TONS/DAY

РУМЫНИЯ
ПШЕНИЧНАЯ МУКА
100 ТОНН/СУТКИ

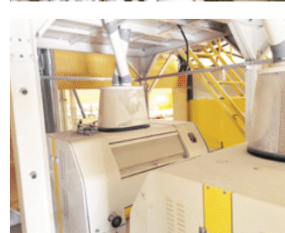
2015



ALGERIA
WHEAT FLOUR
60 TONS/DAY

АЛЖИР
ПШЕНИЧНАЯ МУКА
60 ТОНН/СУТКИ

2014



EGYPT
RICE FLOUR
100 TONS/DAY

ЕГИПЕТ
РИСОВАЯ МУКА
100 ТОНН / СУТКИ

2014





TANIS
MILLING TECHNOLOGIES

THANK YOU FOR LISTENING



Your Milling Partner

Since 1956.
Taniş Milling Technologies

