



HENRY SIMON
MANCHESTER 1878

Meeting in IAOM Western Canadian District Meeting,
Date : Spetmebre,21st, 2017

Henry Gustav Simon (1835 – 1899)



Henry Simon, M.Inst. C.E., M.I.Mech.E., F.R.G.S. Founder of the Simon Engineering Group

Henry Simon

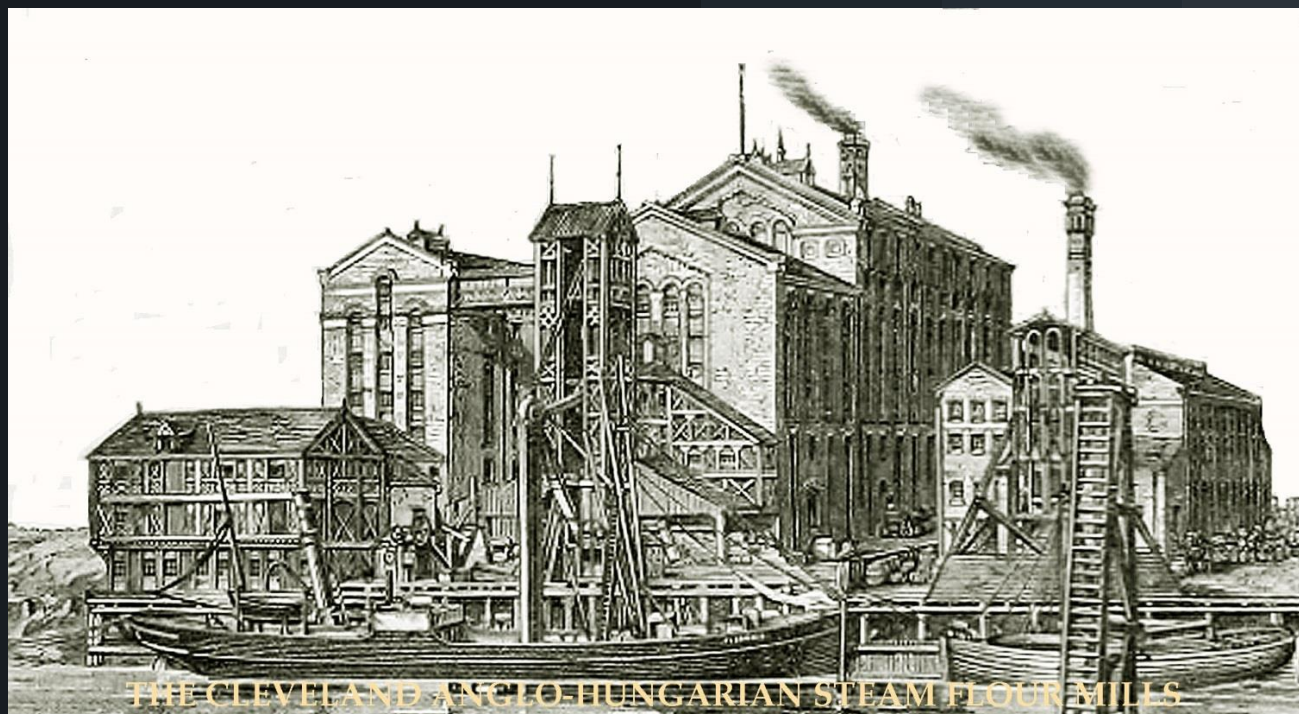
**1878 - Founded Henry Simon Ltd
introduced gradual roller mill
reduction 'Simon System' for
McDougal Brothers**

**1881 - Built the world's first automatic
Simon System mill in Chester**

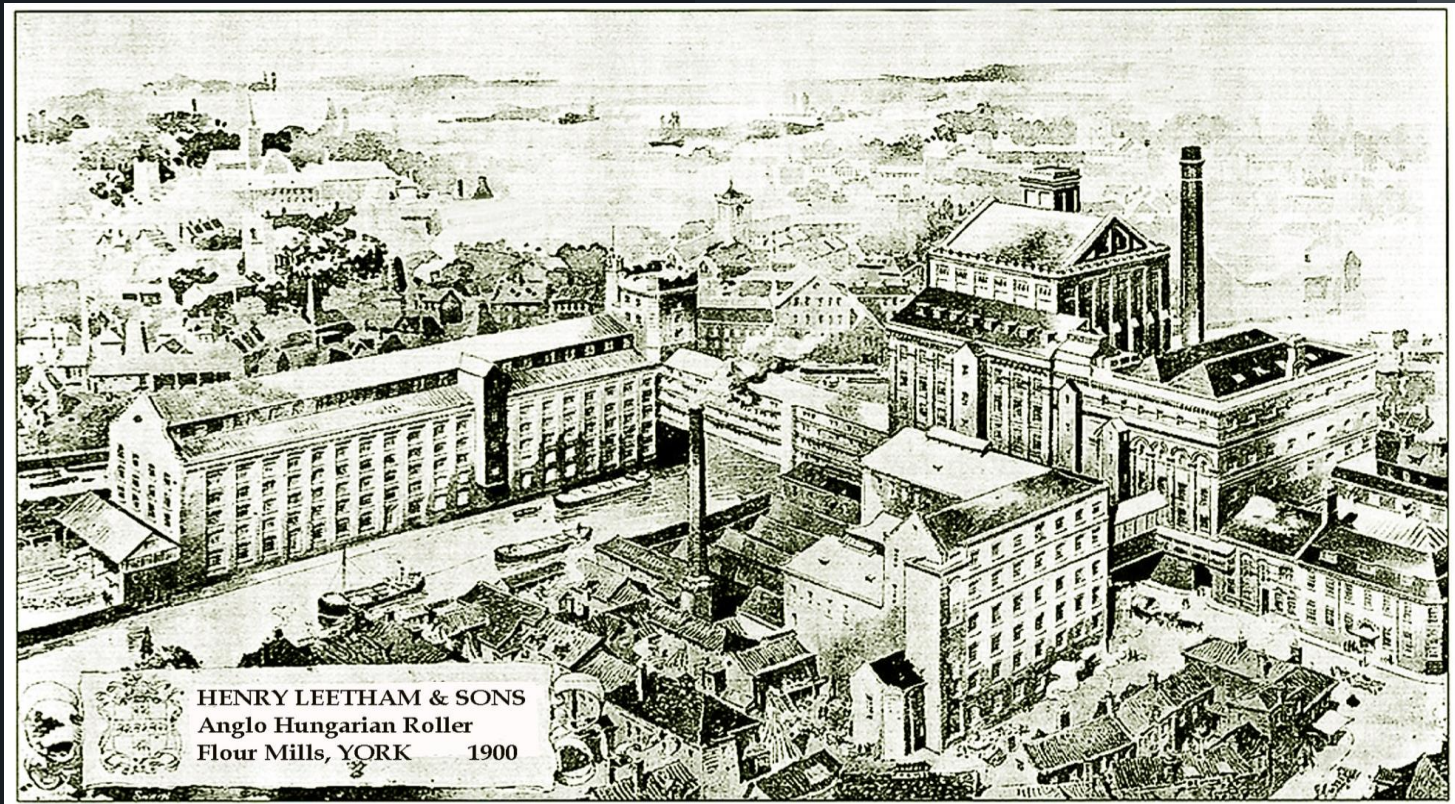
1892 - Over 400 mills constructed



Henry Simon was a principal facilitator of the roller flour milling revolution in the United Kingdom



THE CLEVELAND AND ANGLO-HUNGARIAN STEAM FLOUR MILLS



A SIMON MILL and one of the largest roller flour mills in Europe

SIMON MILLS grew in size and capacity –



**MILLENNIUM MILLS
Main Roller Floor**



Hosegood Industries Ltd. Mills, Avonmouth [1960s]

SIMON MILLS grew in size and capacity –

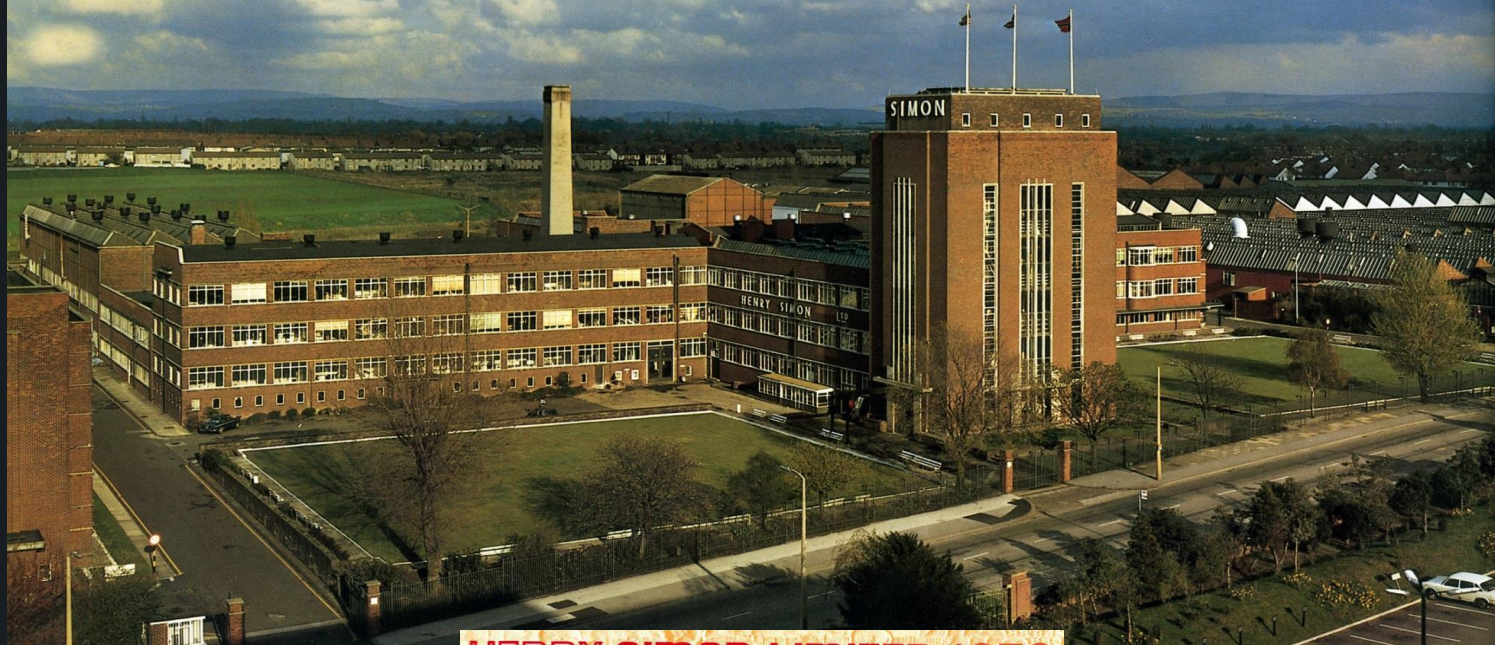


**Co-Operative Wholesale Society Mill, Victoria Dock,
Silvertown, London**



HENRY SIMON Limited Flour Milling – 1930s

**We have more than 100 years of experience and we are
one of the largest and most progressive milling engineering
organisations in the World**



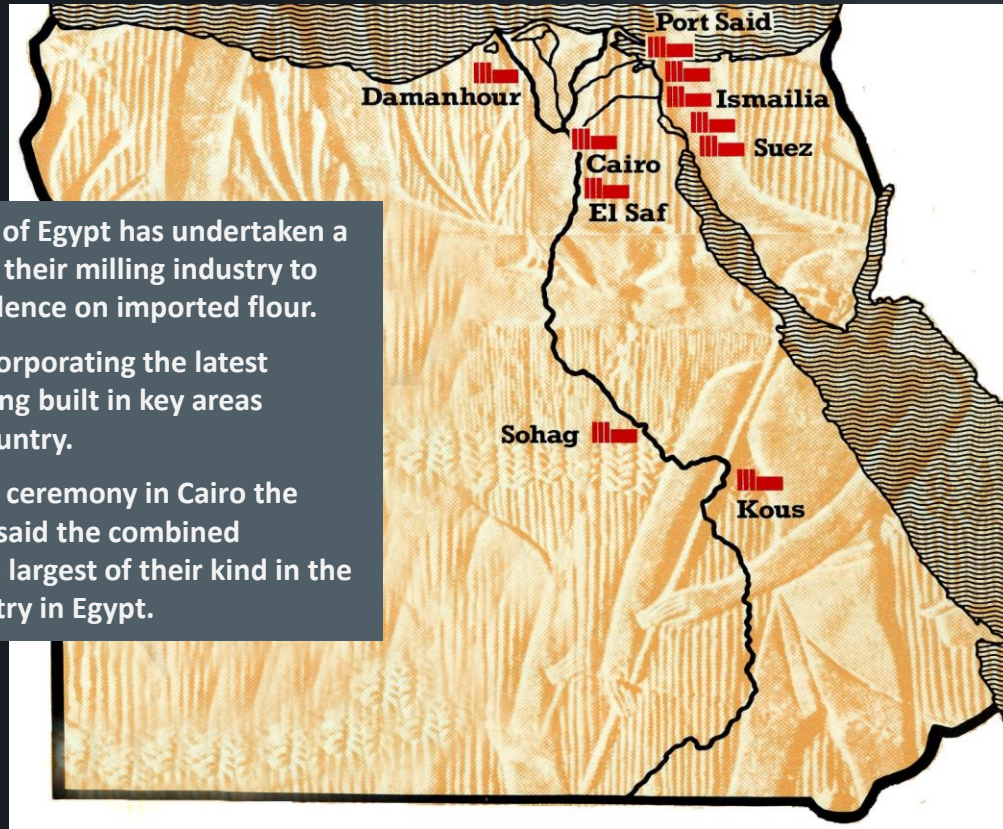
HENRY SIMON LIMITED 1978

EGYPT

The Arab Republic of Egypt has undertaken a large expansion of their milling industry to reduce the dependence on imported flour.

10 Simon Mills incorporating the latest equipment are being built in key areas throughout the country.

At a recent signing ceremony in Cairo the Minister of Trade said the combined contracts were the largest of their kind in the flour milling industry in Egypt.



HENRY SIMON LIMITED 1978

JAPAN

Marusho Flour Mills are a private company supplying the home market. The new 200 tonne mill at Okayama is almost entirely equipped with Simon machinery including 'J' Rollermills, 'S' mark-6 Purifiers and Wheat Cleaning units.



NIPPON FLOUR MILLS COMPANY Ltd.

Henry Simon Ltd. have supplied Nippon Flour Mills new Nagoya Mill with the most advanced Rollermills and Bin Activators available.

UNITED STATES of AMERICA

NABISCO flour mill,
Toledo, Oregon



HENRY SIMON LIMITED 1978

Simon were responsible for the design, installation and commissioning of the NABISCO flour mill with a daily wheat capacity of 1,400 tonnes. When new it was the largest capacity milling complex ever built in the world.

GERMANY



HENRY SIMON LIMITED 1978

Launch of 'K' type Rollermill. Detmold 1978

HENRY SIMON REFERENCES IN USA AND CANADA

- MOOSE JAW , SASK, CANADA
- CALGARY,ALBERTA,CANADA
- SASKATOON,SASK,CANADA
- HUMBERSTONE,ONTARIO,CANADA
- MONTREAL,QUE,CANADA
- BUFFALO,N.Y,USA
- GREENVILLE,TEXAS,USA
- DETROIT,MICHIGAN,USA
- WABASHA,MINNESOTA,USA
- PONCA CITY,OKLAHOMA,USA
- BALDWINVILLE, N.Y, USA
- ST PAUL, MINNESOTA,USA
- SALINA,KANSAS,USA
- KANSAS CCITY, MISSOURI,USA
- BLACKWELL,OKLAHOMA,USA
- LOCKPORT, N.Y. USA
- CLAY CENTER, KANSAS, USA
- NEWTON, KANSAS, USA
- DAVENPORT, IOWA,USA
- NEW PRAGUE, MINNESOTA, USA

A HISTORY OF INNOVATION

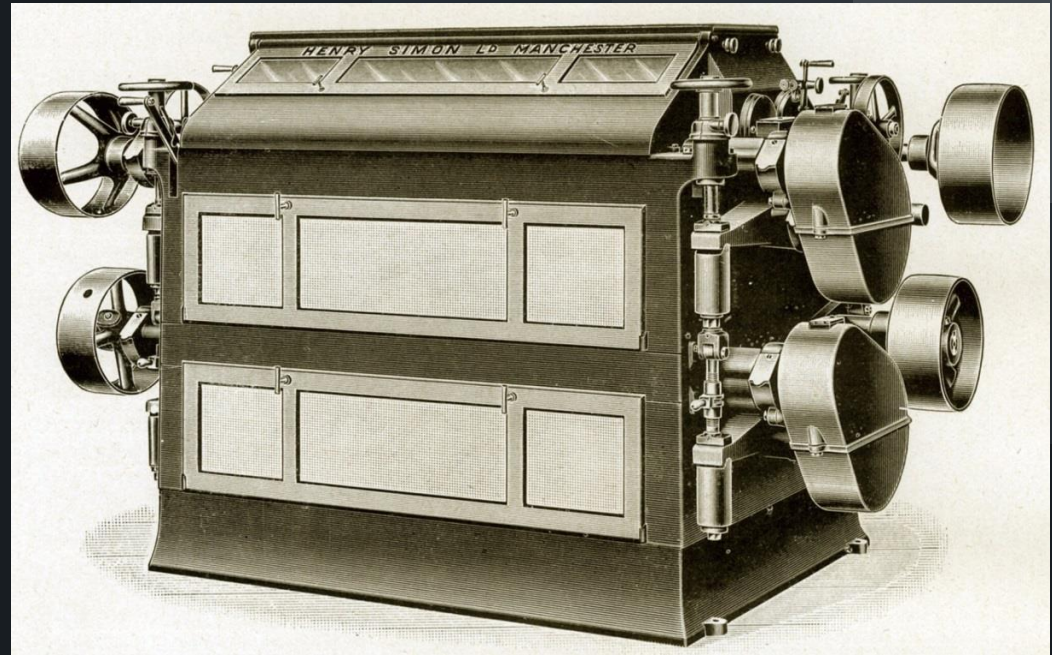
First Two-High Rollermill

“REFORM” PATENT
EIGHT-ROLLER MILL

CATALOGUE

1913 January

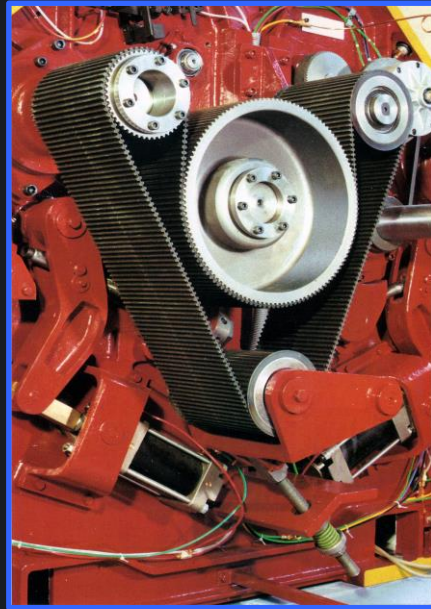
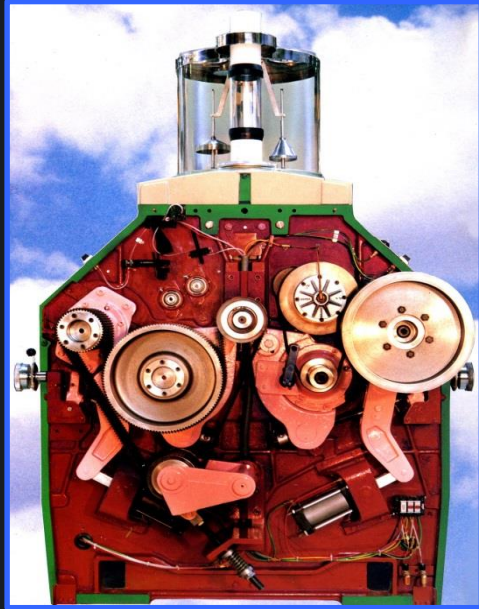
FOURTEENTH EDITION



Designed to procure double treatment on the first break. The wheat is opened out on the upper pair of rolls and so prepared for heavier treatment on the lower pair. Intermediate handling of the stock is reduced to a minimum and more semolina and broader bran is produced.

A HISTORY OF INNOVATION

First Oil Free Belt Differential Drive

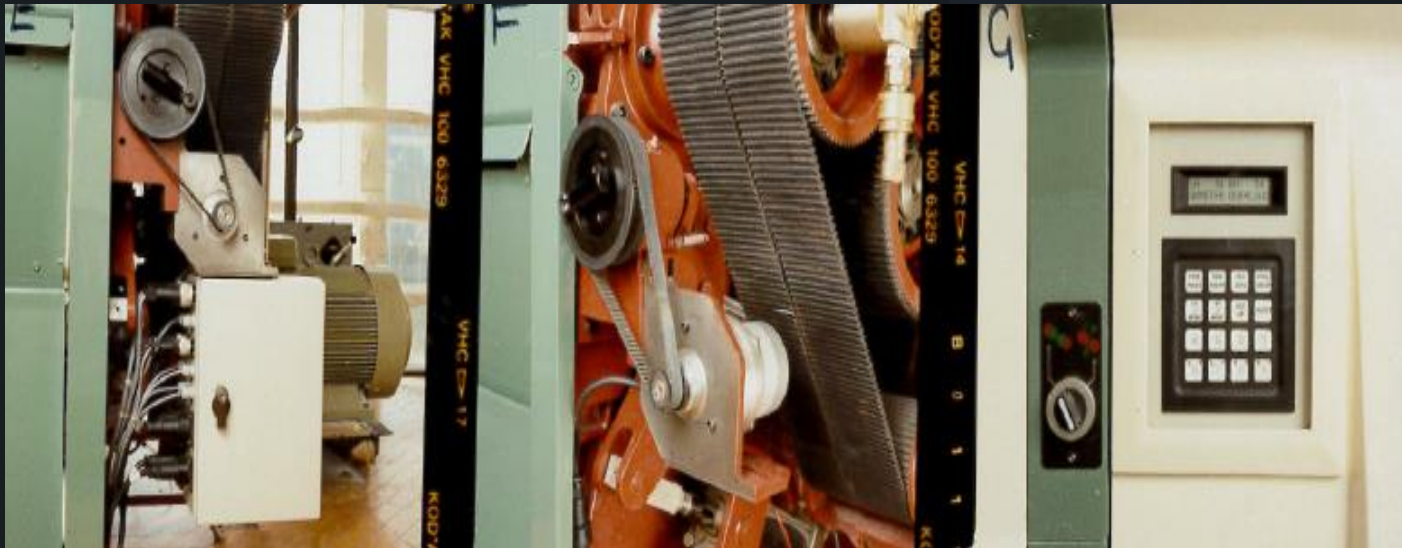


HENRY SIMON ROLLERMILL TYPE – XK

Twin Power High Torque Drive Differential is a break through in rollermill design. The Twin Power belt used in the differential drive has been developed after years of research and exhaustive testing

A HISTORY OF INNOVATION

First Rollermill AutoGap



A HISTORY OF INNOVATION

Chancelot Mill, Edinburgh

First Bulk Loading:

20 tons of flour in 2 minutes



A HISTORY OF INNOVATION

First Mill PLC Automation System

Odlums,
Cork
Ireland



A HISTORY OF INNOVATION

Wheat Debranning



A HISTORY OF INNOVATION

First Food Grade Plastic Sieves

THE INTERLOCK SIEVE COSTS NO MORE THAN A TRADITIONAL WOODEN SIEVE.

PROCESS BENEFITS

- Food quality materials in contact with the product.
- Maximum protection against mould and bacteria transfer.
- Significant reduction in 'stock build up' and condensation.

MAINTENANCE AND COST BENEFITS

- No fill.
- No maintenance.
- No leaks.
- No extra cost.
- Very high wear resistance.

PLANSIFTER RANGE
Designed and manufactured to suit leading milling engineers Plansiflers.

A UNIQUE DESIGN THAT MEETS TODAY'S EXACTING HYGIENE STANDARDS

NO FILL
Distinctive seal design eliminates fill / contamination

NO MAINTENANCE
Stainless steel trap handles requiring low maintenance

NO LEAKS
Interlocking profiles lock the sieve stack together

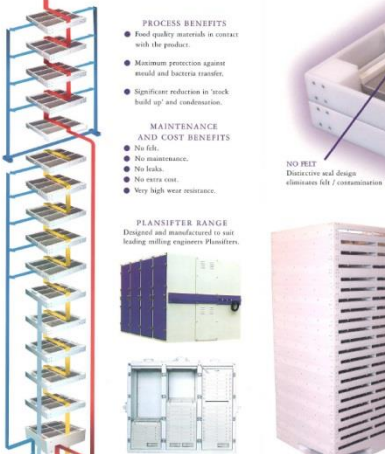
FOOD QUALITY
Manufactured from food quality polypropylene

SIEVE CLEANERS
A complete range of food quality plastic cleaners are available

INTERLOCK SIEVES BETTER BY DESIGN

- Interchangeable with existing sieves and sifters
- Innovative interlocking and sealing of sieve stack eliminating sieve movement
- A complete range to fit all leading manufacturers sifters.

PLANSIFTER LOOSE CLOTHING FRAMES
The unique design allows you to use your existing Simons, Roberson or Bunkle clothing frames



Celebrating the Future SATAKE

A FOOD QUALITY SIEVE FOR THE MILLING INDUSTRY

NO FILL
NO MAINTENANCE
NO LEAKS
NO EXTRA COST
VERY HIGH WEAR RESISTANCE

THE FOOD QUALITY SIEVE


- Maximum protection against mould and bacteria transfer.
- Significant reduction in 'stock build up' and condensation.
- Food quality materials in contact with the product.
- Innovative locking and sealing of sieve stack
- Interchangeable with existing sieves and sifters
- A complete range to fit all leading manufacturers sifters.

SATAKE CORPORATION
SATAKE CORPORATION UK DIVISION
SATAKE USA

HIROSHIMA, JAPAN
STOCKPORT, ENGLAND
HOUSTON, U.S.A.

Tel: +81 824 20 8860 Fax: +81 824 20 8865
Tel: +44 161 406 5800 Fax: +44 161 406 3801
Tel: +1 281 276 5800 Fax: +1 281 484 1427

www.satake.co.uk
www.satake-usa.com
www.satakegroup.com



A HISTORY OF INNOVATION

First Optical Colour Sorter



Satake (Nee-ESM -Electric Sorting Machine Company) developed the first optical sorter in 1931 in Lowell, Michigan.

HISTORY OF INNOVATION

VERTICAL VBF MAIZE DEGERMER

Coarse and Fine
Adjustment

Long Lasting Screens

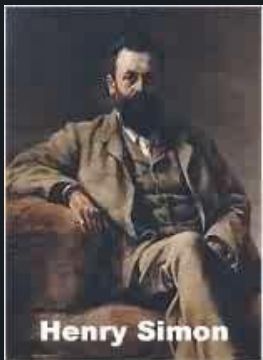


Quick Change Screen
Cartridge

Adjustable Resistance
Bars

Compact feed roll & Improved Clutch

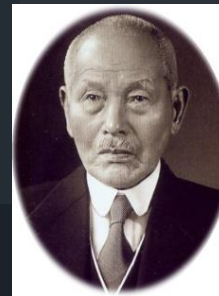
Henry Simon Ltd
1878



Thomas Robinson
1838



Robinson Milling Systems
1988



Satake
1896



1991 → **SATAKE**

HENRY SIMON FACTORY IN 1905



Erecting Shop



Painting Shop



Wood Working Shop



Machine Shop



Satake, Alapala form strategic partnership

HIROSHIMA, JAPAN — Satake Corp. and Alapala Machine Industry & Trade Inc. announced on June 29 that the companies have signed a strategic partnership agreement. This partnership is an opportunity for both companies to combine their expertise, resources, experiences and sales networks. The partnership will include mutual licensing for manufacturing, joint product development, mutual distributorship, and joint sales and marketing promotion.

“We are pleased to have the opportunity to expand our global businesses in the grain industries by combining our considerable strengths in R&D, manufacturing, marketing, sales and after-sales service within both companies,” said Toshiko Satake, chairperson of Satake Corporation.

“With the combined synergies of Alapala and Satake, this partnership will enable both the companies to offer unique services to the grain industry,” said Gökrem Alapala, vice-chairman of Alapala Machine Industry & Trade Inc.

Founded in 1896, Satake started as an inventor of Japan’s first power driven rice milling machine. Today, Satake is a global leader in the grain processing technology and produces a comprehensive range of individual machines, integrated systems and total engineering solutions for the processing of rice, wheat and other grains. Satake has manufacturing and sales bases in eleven countries including Japan, U.S., Brazil, U.K., India, Myanmar, Thailand, Vietnam, Indonesia, China and Australia.



From left, Dr. Toshiko Satake, Gökrem Alapala and Hajime Harada, managing director of Satake Europe, celebrate the signing of their agreement.

Founded in 1954, Alapala is a global provider of flour mills, maize mills, rice mills, feed mills, silos and storage systems, and steel fabricated mill buildings. Alapala builds turnkey plants of any desired capacity and is a one of the top 500 exporters in Turkey, exporting 95% of its production. It has a considerable number of turnkey references in over 85 countries in all the four continents.

SATAKE – ALAPALA STRATEGIC PARTNERSHIP

Satake Corporation and Alapala signed the strategic partnership agreement in 29 th of June , 2015 . According to this agreemnt ; both sources will be combined and making partnership in 5 different areas. One of decision in this partnership is to produce and marketing of Henry Simon machines in Turkey, Japan and USA.



• SATAKE, ALAPALA AND HENRY SIMON

Behind Henry Simon ; There are 3600 employees and 300 R and D engineers .



• SATAKE headquarter HIROSHIMA, JAPONYA

Satake is making production in Japan , USA, China , Brazil and Thailand , and with these countries there are sales and after sales offices in India, Indonesia , Bangladesh , Myanmar , UK and Australia .

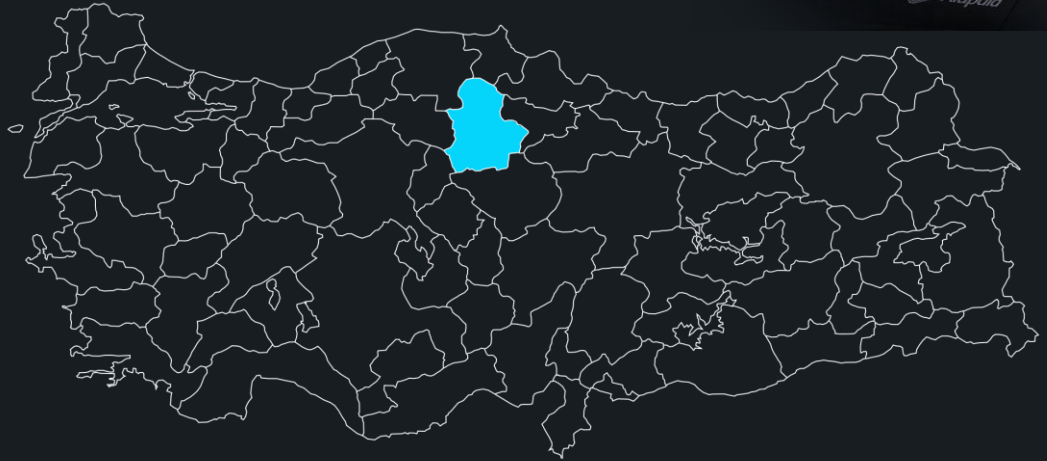


Creating the Future
SATAKE

History of ALAPALA

1954

Alapala has been founded in Çorum by Mr. Mehmet Alapala, started by manufacturing wooden plansifters in 1954.



Recent Satake / Alapala collaboration

ALAPALA BUYS FROM SATAKE

- Color Sorters
- Debranner
- Degerminator

SATAKE BUYS FROM ALAPALA

- Plansifter
- Bran finisher
- Air locks

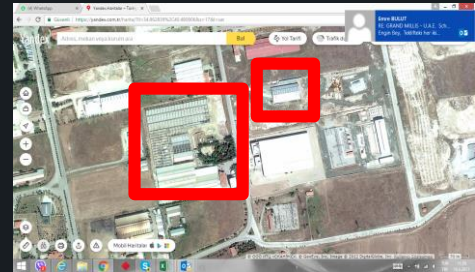
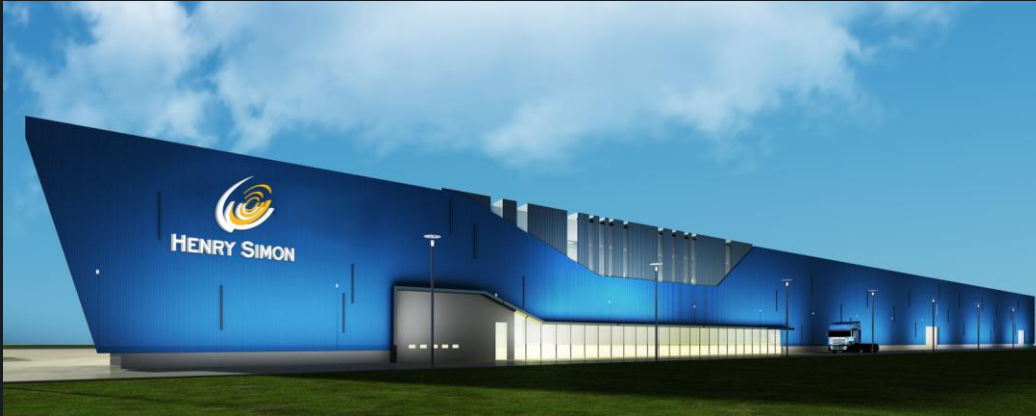


FACTORY

HOW MANY m2 AND PRODUCTION CAPACITY

Total area will be 50.000 m2

15-20 Turn Key Projects per year



WHAT CAN ALAPALA DO?

Electrical Installation and Control Systems

Alapala is one of the only two companies in the world with its own automation department.

1. Electricity project drawings of low tension and compensation systems of mills
2. Design and production of MMC panels
3. Design and production of compensation panels
4. PLC programming and Scada software
5. Computer trouble-shooting and program installances
6. After sales services including long distance connectivity

Our suppliers:



HENRY SIMON
MANCHESTER 1878

CERTIFICATES - ISO - CE, ATEX, UL, CSA Ability

Alapala has:



Alapala used in European projects:



Alapala can use (USA – Underwriters Laboratories
Safety Standard:



Alapala used in Canadian projects:



WHERE is HS SOLD



EUROPE

Belgium – Czech – Denmark – Germany – Estonia
Iceland – Greek – Spain – France – Croatia
Switzerland
Cyprus – Luxembourg – Hungary – Malta – Holland
Austria – Poland – Portugal – Slovenia – Slovakia
Finland – Sweden - U.K.

KEY ACCOUNTS

INDIA – CHILE – PARAGUAY – URUGUA –
BOLIVIA – COLOMBIA – ECUADOR – PERU –
VENEZUELLA – SURINAME

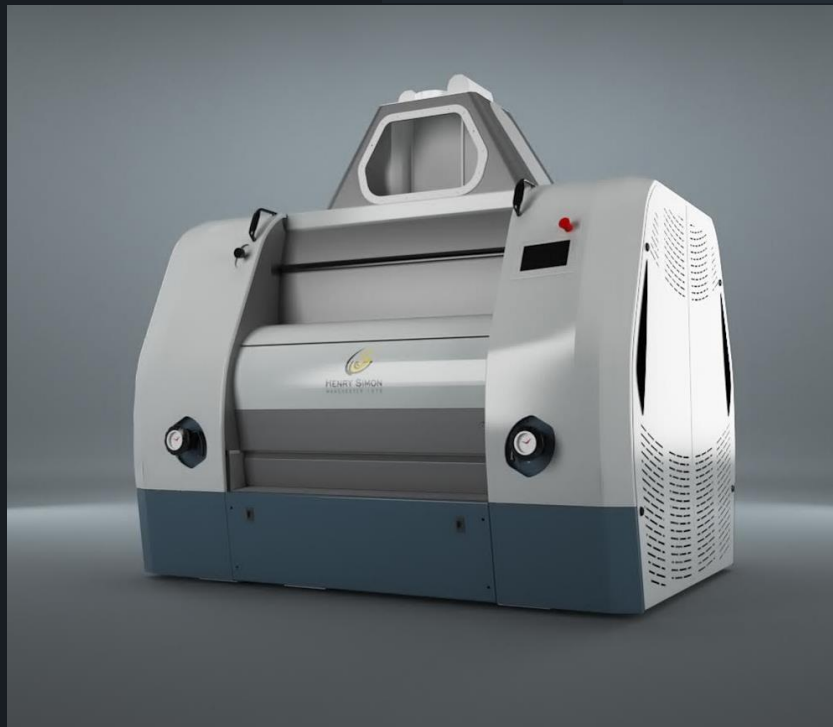


HENRY SIMON
MANCHESTER 1878

HENRY SIMON ROLLER MILL PAST - TODAY



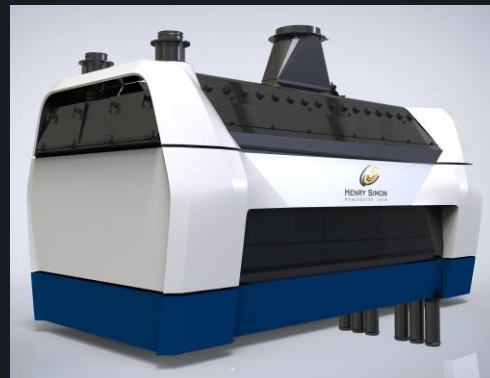
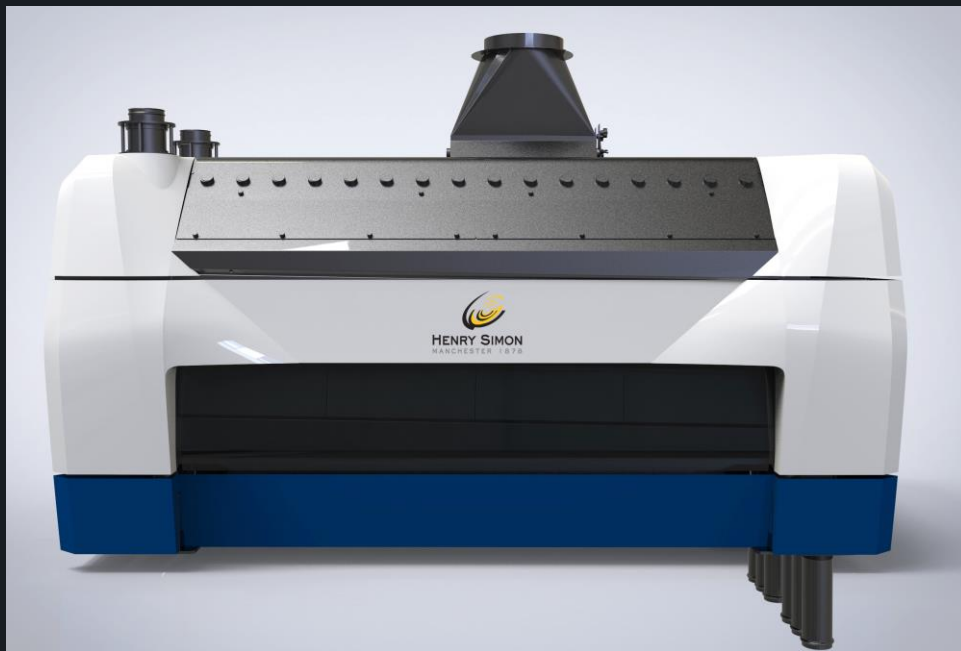
ROLLER MILL



Sensors for Henry Simon ROLLER MILL

TYPE	FUNCTION
Rotation Sensor for Feed Roll	To alert how/ high rotation of feed roll
Temperature Sensor for Timing Belt	To alert abnormal high temperature on timing belt
Temperature Sensor for Main Roll	To alert abnormal high temperature on main roll / To alert temperature gap partially
Rotation Sensor for Main Roll	To alert stop of main roll
Air Pressure Sensor	To alert low / high air pressure
Clogging Sensor	To alert clogging inside lower hopper
Vibration Sensor for Roll	To alert abnormal vibration of roll

PURIFIER



PLANSIFTER



AFTER SALES SERVICE AND SUPPORT

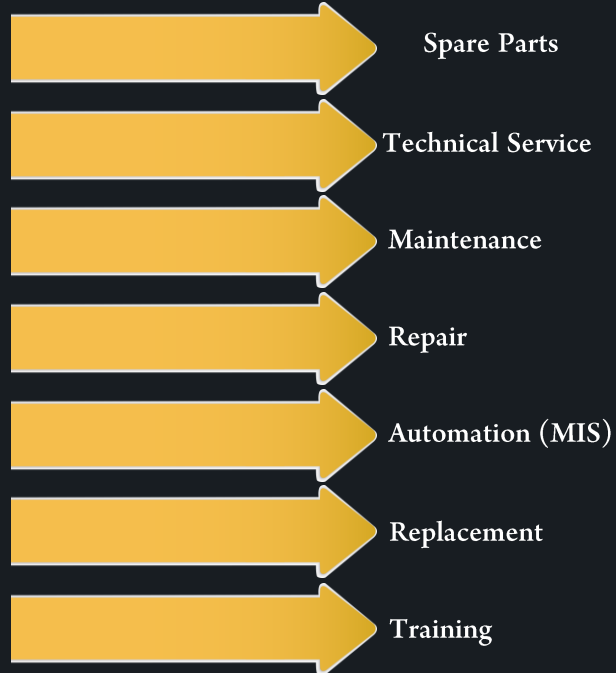
HS will organize after sales service operation in order to create strong customer retention and brand loyalty and to keep the customer lifetime and moreover to increase the efficiency in problem solving. Current Satake After Sales Team will be responsible for this operation and Alapala give support.



AFTER SALES SERVICE AND SUPPORT



HENRY SIMON
MANCHESTER 1878



A decorative graphic in the top right corner consisting of a grid of squares in various shades of dark blue and grey.

THANKS

For Watching and Listening