

# BUILD THE MILL



INTERNATIONAL ASSOCIATION  
OF OPERATIVE MILLERS





# BUILD THE MILL



In order to guarantee maximum functionality, investment cost optimization and management efficiency of a mill installation some elements are fundamental...



# BUILD THE MILL

Technological  
Design

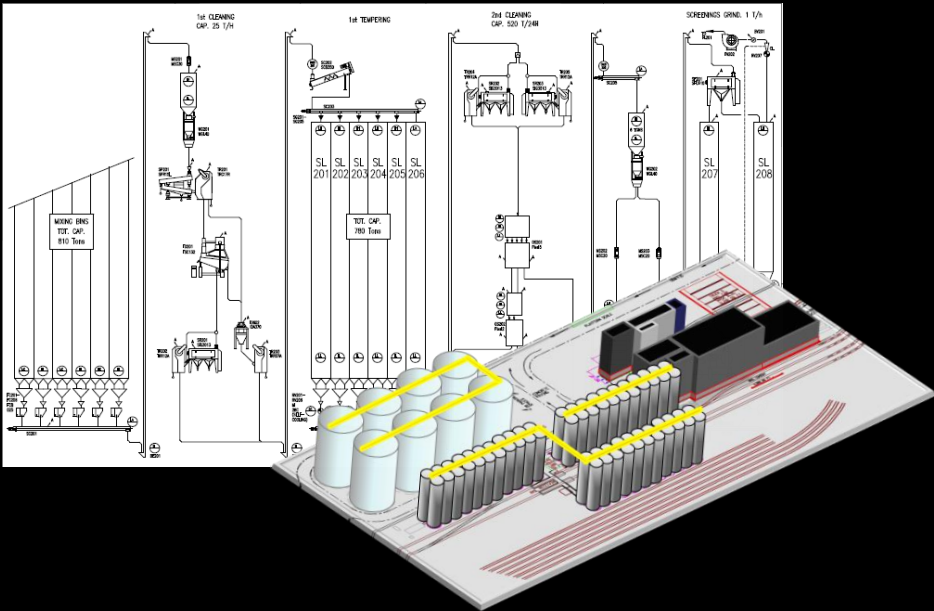
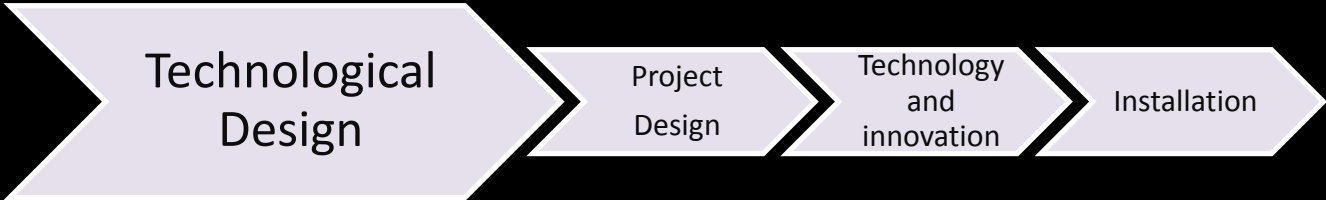
Project  
Design

Technology  
and  
innovation

Installation



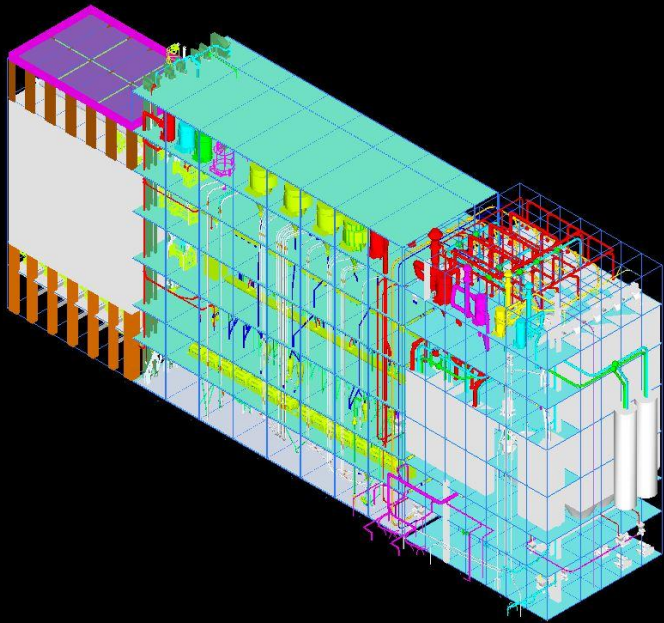
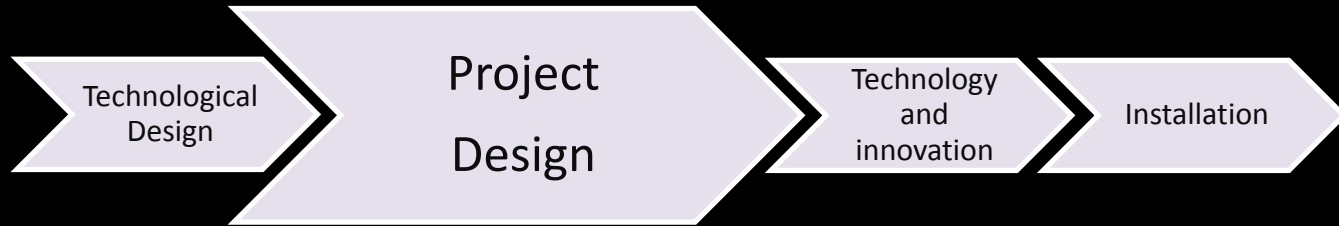
# BUILD THE MILL



Flow sheet drawings  
tailor to customer and  
markets requirements



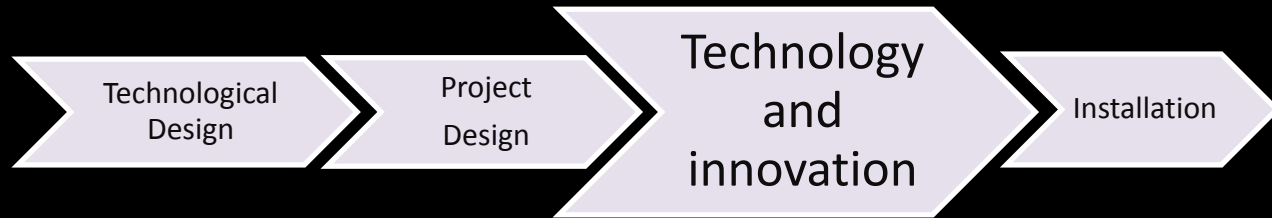
# BUILD THE MILL



Functional project with support of 3D design



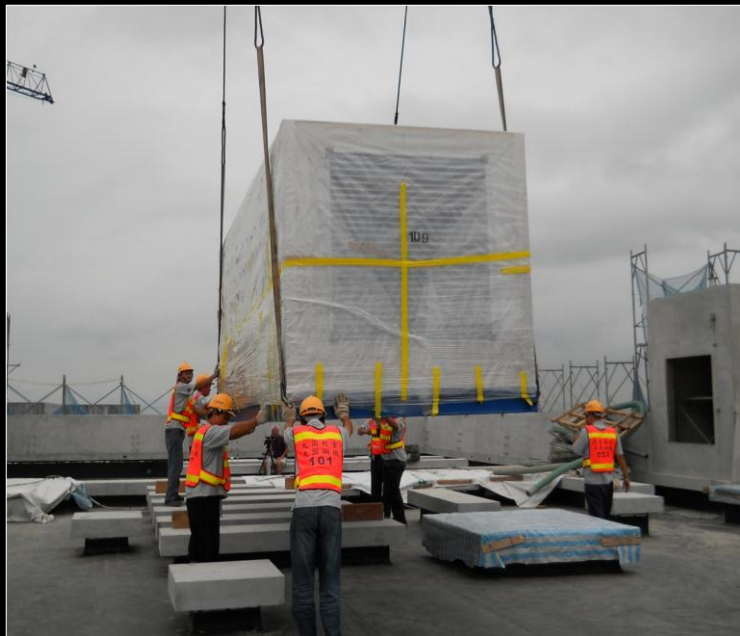
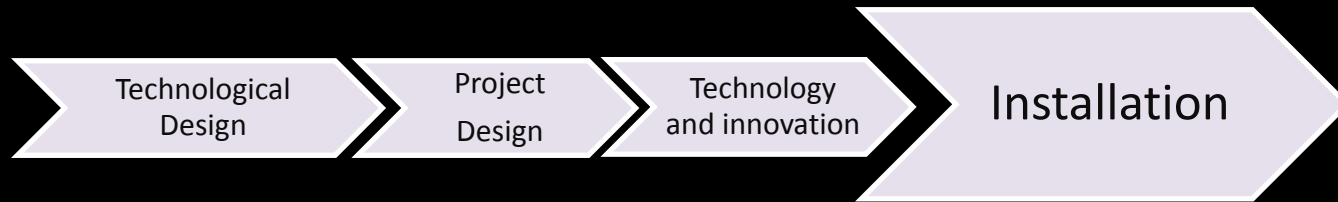
# BUILD THE MILL



Latest technology and qualitative manufacturing process  
& use of innovative materials/ solutions



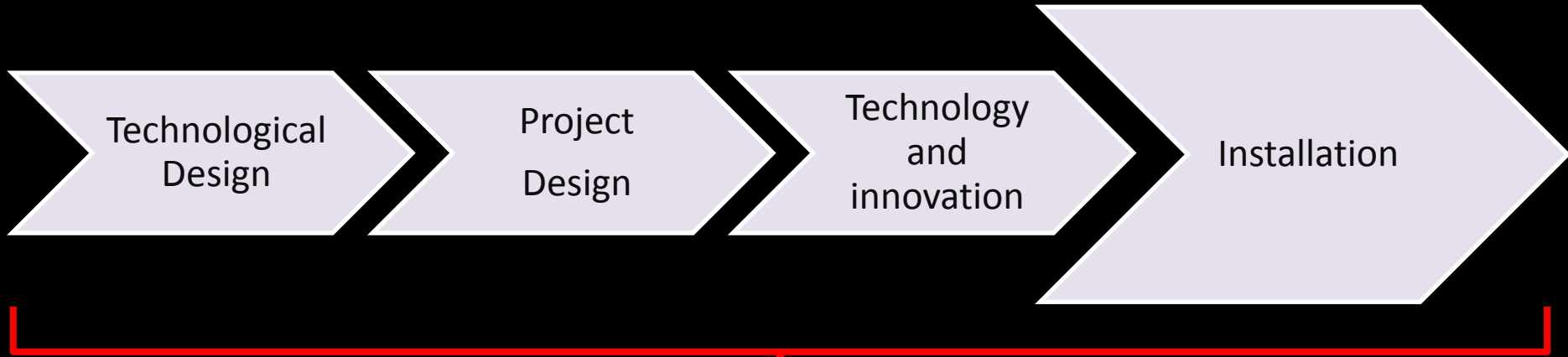
# BUILD THE MILL



Awareness in building installation



# BUILD THE MILL



**OCRIM'S ESTABLISHED  
KNOW-HOW**



OCRIM, with its well-known experience and maturity in the milling sector, has developed

# BUILD THE MILL



A software created to optimize installation from planning up to building site assembly management.



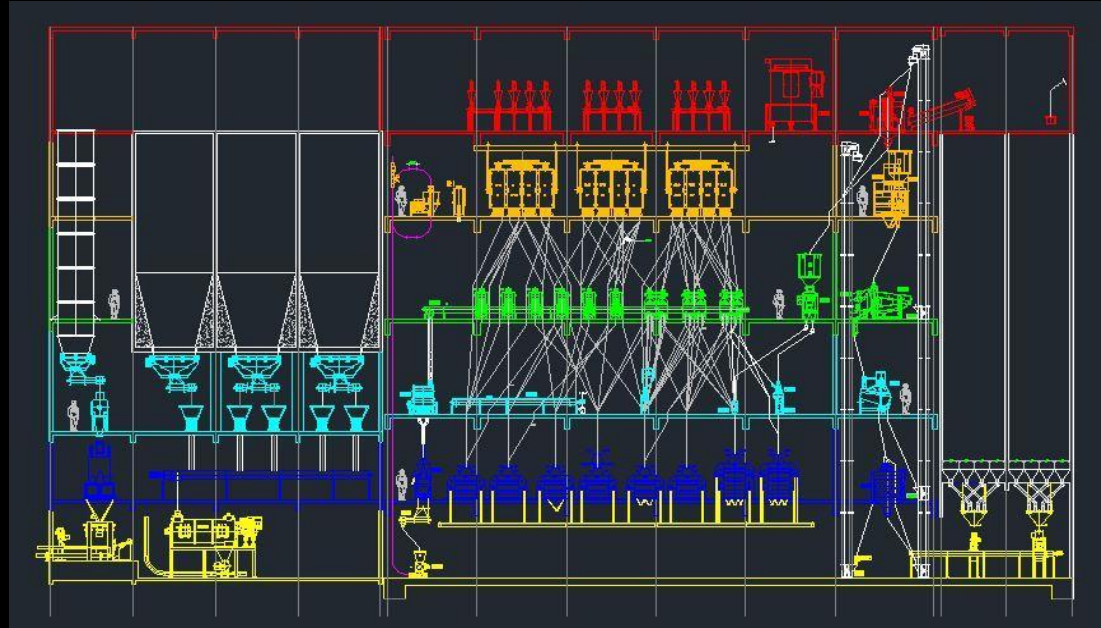
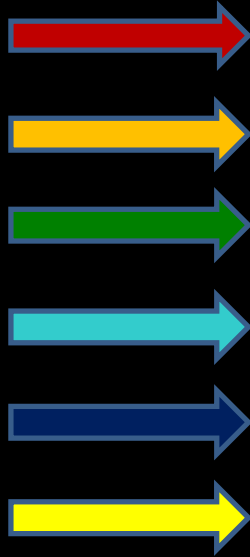
# BUILD THE MILL



# HOW DOES IT WORK?



# BUILD THE MILL



*During design*, every single level of the mill & single machine contained will be assigned with a specific colour for identification purposes



# BUILD THE MILL



*Before shipping departure*, every single package delivered is assigned considering the colour used for specific machines on the layout drawings



# BUILD THE MILL



*Single machinery* will be also identified with barcorde number



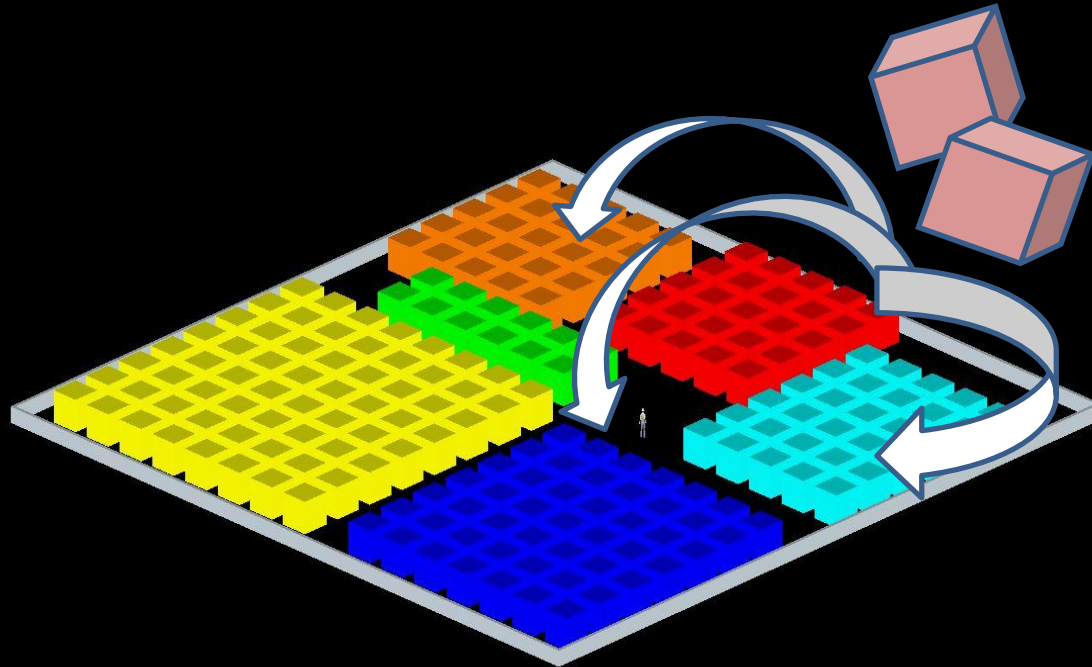
# BUILD THE MILL



*Single components* are identified by specific barcode number



# BUILD THE MILL



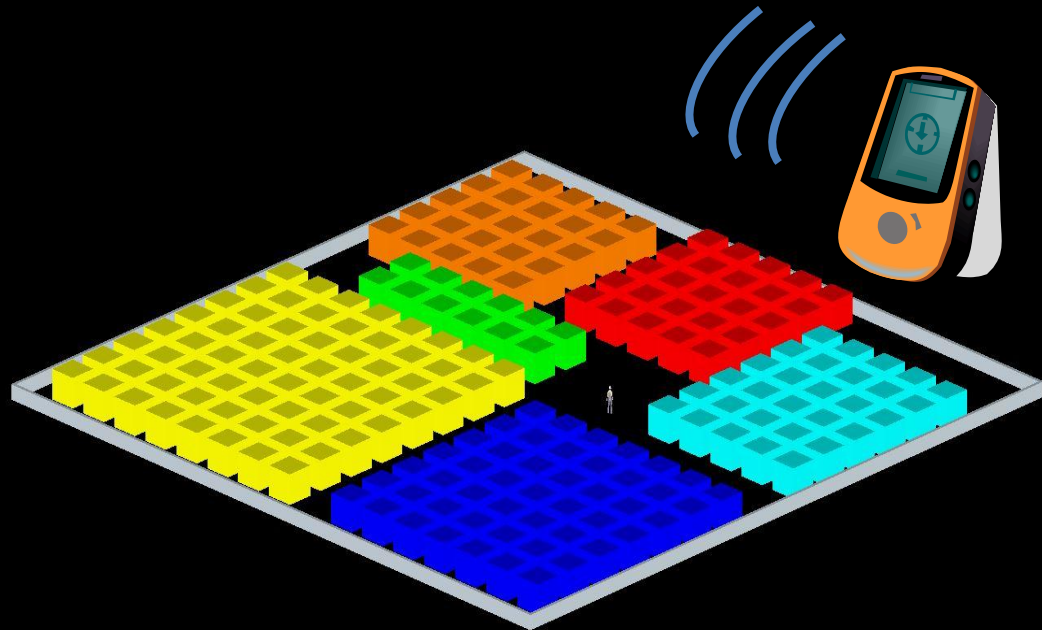
*At the arrival to building site, packaging boxes can be classified based on the colour utilized on the layout drawings*



# BUILD THE MILL



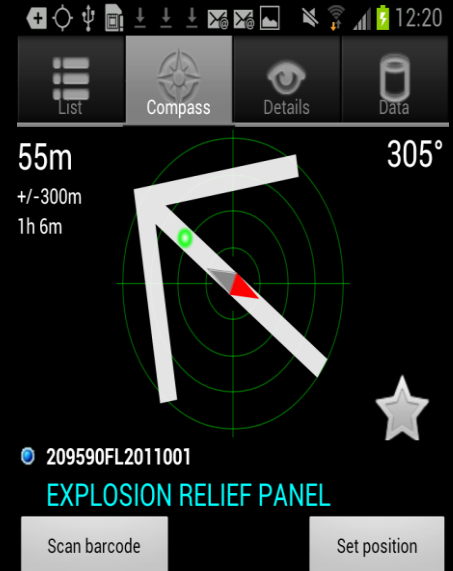
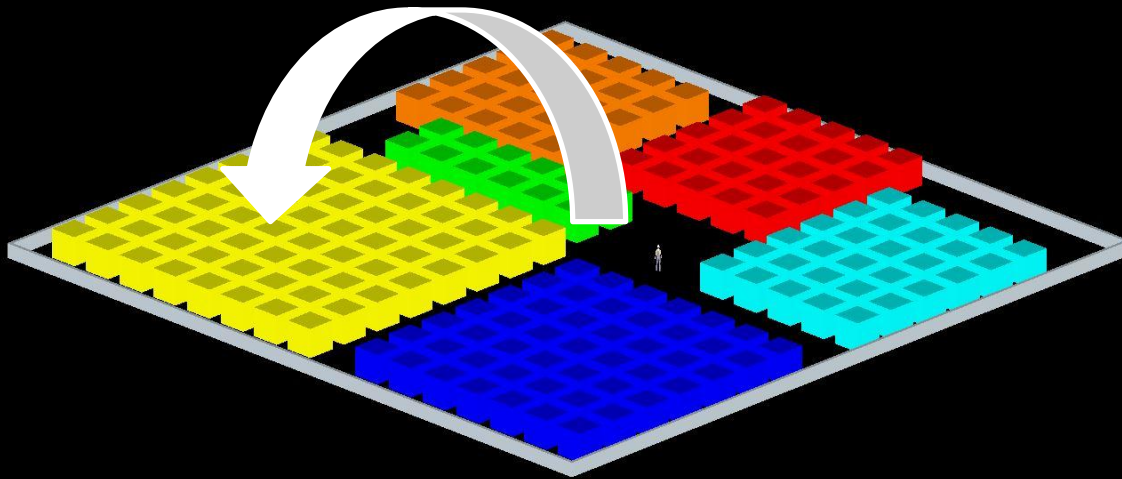
gps	300m	1h 2m
8923VN145	PIPE CLAMP D=50-145	51m >
200096100294	COLLO1	54m v
X2270209590	UPPER PART FOR FILTER TYPE FK/A	54m v
209590FL2011001	EXPLOSION RELIEF PANEL	54m v
200096100293	COLLO2	63m v
CORPOFKCA120	SBODY OF FILTER TYPE FK/A 120/25	63m v
91047077	SAFETY GRATE FOR SLEEVE	63m v
200096100292	COLLO3	63m v
X2271209590	FLAT BOTTOM SWEEPER	63m v
91045123	SUPPORT FOR SENSOR	63m v



***GPS signals*** will help identify the exact location of single pieces or machines contained in boxes



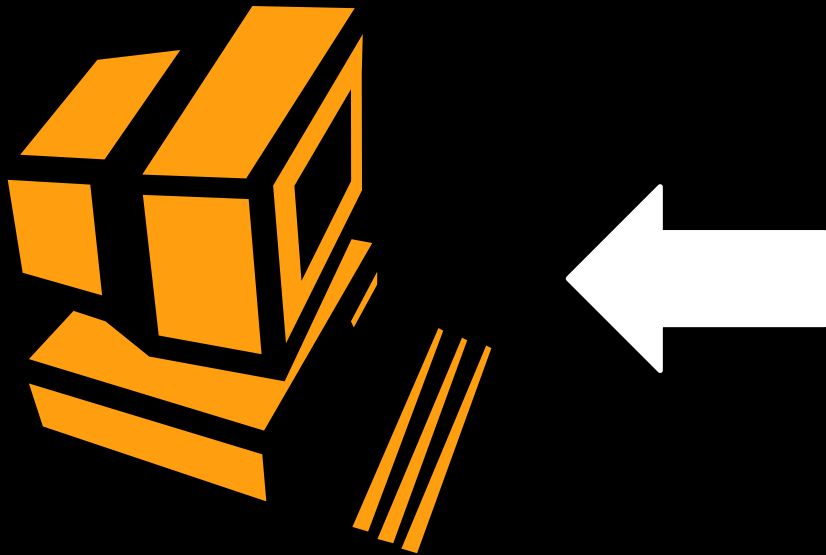
# BUILD THE MILL



***GPS signals*** will help identify the exact location of single pieces or machines contained in boxes



# BUILD THE MILL



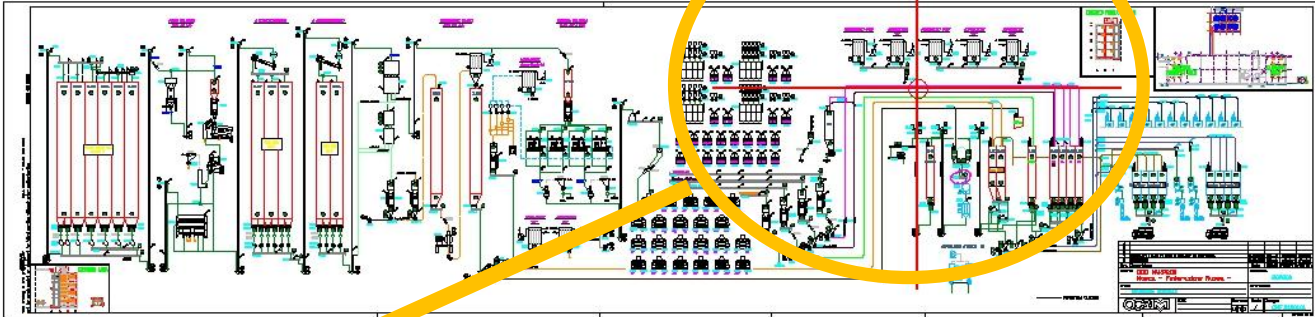
*Once a single piece is individuated, a barcode reader link to a computer will help...*



# BUILD THE MILL

Ocrim Plant Viewer: C:\OCRIM\sea-ced\BuildTheMillCommesse\209200\dx\Diagrammi\CMF.01.001.dxf

File Options Info Help



Move reduced

Commissa:

209200

Search with barcode:

Items:

- Diagramma
- AV301
- AV302
- AV303
- AV304
- BE101
- BE201
- BE202
- BE203
- BE204
- BE205

View selected item

View:

Previous Next

Reset to: X-Y Y-Z X-Z

AV301

- Piano di montaggio
- CMF.02.003.04.dxf

Dettagli accessori

Accessori Utenze

Descrizione	Qta	HL	Disegni A...
Cassonetto di carico	2		XH.0830
Supporto per indicatore di livello	2		XH.1365
Raccordo da AV a tubo Ø 120mm con bordo	2		XH.0837
Piastra annuncio AV	2		XH.0869

Mostra accessorio

Sintesi

HDM

3D

Livello: 1 67% 2 28% 3 11% 4 60% 5 100% 6 69%

60/69 5/18 3/27 9/13 10/10 40/58

Version 1.00.00 - Ocrim Plant Viewer (ced1@ocrim.com)



# BUILD THE MILL

Ocrim Plant Viewer: C:\OCRIM\sea-ced\BuildTheMillCommesse\209200\dx\Diagrammi\CMF.01.001.dxf

File Options Info Help

Move reduced

Commissa: 209200

Search with barcode: 85126587422458

Items:

- Diagramma
- AV301
- AV302
- AV303
- AV304
- BE101
- BE201
- BE202
- BE203
- BE204
- BE205

View selected item

View: Previous Next

Reset to: X-Y Y-Z X-Z

AV301

- Piano di montaggio
- CMF.02.003.04.dxf

Dettaglio accessori

Accessori	Utenze		
Descrizione	Qta	HL	Disegni A...
Cassonetto di carico	2		XH.0830
Supporto per indicatore di livello	2		XH.1365
Raccordo da AV a tubo Ø 120mm con bordo	2		XH.0837
Piastra annuncio AV	2		XH.0869

Mostra accessorio

HDM

Sintesi

3D

Livello: 1 67% 2 28% 3 11% 4 69% 5 100% 6 69%

60/69 5/18 3/27 9/13 10/10 40/58

Version 1.00.00 - Ocrim Plant Viewer (ced1@ocrim.com)



# BUILD THE MILL

Ocrim Plant Viewer: C:\OCRIM\sea-ced\BuildTheMill\Commesse\209540\dxfl\Piani di montaggio\CMF.02.001.01.dxf

File Options Info Help

Move reduced

Commissa: 209540

Search with barcode:

Items:

- BV302
- CS201
- DM201
- DS301
- DS302
- DS303
- DS304
- DS305

View selected item

Monta componente

View:

Previous Next

Reset to: X-Y Y-Z X-Z

Mostra accessorio

HDM

Accessori	Utenze	Descrizione	Qta	HL	Disegni A...
		Bocchetta uscita con presa d'aria (pass. C1/C2)	1		XH0631
		Bocchetta uscita (pass. C3)	1		XH0627
		Bocchetta uscita (pass. C4)	1		XH0624
		Bocchetta uscita (pass. R1f/R2f)	1		XH0629

Livello: 1 1% 2 0% 3 0% 4 0% 5 0%

Dettaglio accessori

WARNING: There were 1 warning(s)!



# BUILD THE MILL

AV301  
Piano di montaggio  
CMF.02.003.04.dxf

Accessori Utenze

Descrizione	Qta	HL	Disegni A...
Cassonetto di carico	2		XH.0830
Supporto per indicatore di livello	2		XH.1365
Raccordo da AV a tubo Ø 120mm con bordo	2		XH.0837
Piastra annodino AV	2		XH.0869

Mostra accessorio Sintesi

HDM 3D

Dettaglio accessori

Livello: 1 07% 2 28% 3 11% 4 69% 5 100% 6 69%

60/69 5/18 3/27 9/13 10/10 40/58

Version 1.00.00 - Ocrim Plant Viewer (ced1@ocrim.com)

AV301  
Piano di montaggio  
CMF.02.003.04.dxf

Accessori Utenze

Descrizione	Qta	HL	Disegni A...
Cassonetto di carico	2		XH.0830
Supporto per indicatore di livello	2		XH.1365
Raccordo da AV a tubo Ø 120mm con bordo	2		XH.0837
Piastra annodino AV	2		XH.0869

Mostra accessorio Sintesi

HDM 3D

Dettaglio accessori

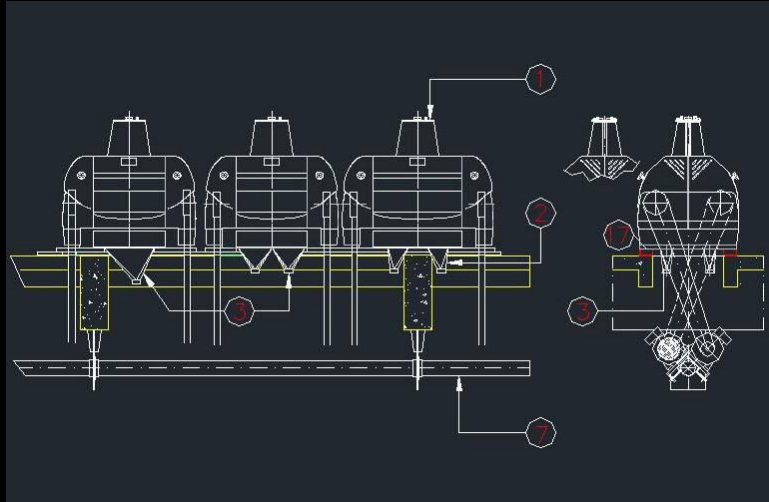
Livello: 1 07% 2 28% 3 11% 4 69% 5 100% 6 69%

60/69 5/18 3/27 9/13 10/10 40/58

Version 1.00.00 - Ocrim Plant Viewer (ced1@ocrim.com)



# BUILD THE MILL



AV301

- Piano di montaggio
  - CMF.02.003.04.dxf

Dettaglio accessori

Accessori		UtENZE	
Descrizione	Qta	HL	Disegni A...
Cassonetto di carico	2		XH.0830
Supporto per indicatore di livello	2		XH.1365
Raccordo da AV a tubo Ø 120mm con bordo	2		XH.0837
Piastra annuncio AV	2		XH.0869

Mostra accessori

Sintesi

HDM

3D

Livello: 1 0/7% 2 28% 3 11% 4 69% 5 100% 6 69%

60/69 5/18 3/27 9/13 10/10 40/58

Version 1.00.00 - Ocrim Plant Viewer (ced1@ocrim.com)



# BUILD THE MILL

The screenshot displays the Ocrim Plant Viewer software interface. On the left, a tree view shows the project structure: AV301 > Piano di montaggio > CMF.02.003.04.dxf. Below this is a 'Dettaglio accessori' button. The main area is divided into 'Accessori' and 'Utenze' tabs. The 'Accessori' tab contains a table with the following data:

Descrizione	Qta	HL	Disegni A...
Cassonetto di carico	2		XH.0830
Supporto per indicatore di livello	2		XH.1365
Raccordo da AV a tubo Ø 120mm con bordo	2		XH.0827
Piastra appoggio AV	2		XH.0869

To the right of the table are buttons for 'Mostra accessorio', 'HDM', 'Sintesi', and '3D'. Below the table is a progress bar for 'Livello' (Level) with six stages:

- Livello: 1: 07% (Yellow)
- Livello: 2: 28% (Blue)
- Livello: 3: 11% (Cyan)
- Livello: 4: 59% (Green)
- Livello: 5: 100% (Orange)
- Livello: 6: 69% (Red)

Below the progress bar, the counts for each level are: 60/65, 5/18, 3/27, 9/13, 10/10, 40/58. A yellow oval highlights the progress bar and the table below it. The bottom status bar shows 'Version 1.00.00 - Ocrim Plant Viewer (ced1@ocrim.com)'.



# BUILD THE MILL

Specialized **OCRIM ASSISTANCE**  
guaranteed during assembly phases & also  
through real time Internet connection



# BUILD THE MILL

Simplification of job pianification during installation

Functional storage of packages at arrival to building site

Speed research of material/components at building site

Time reduction of working schedules

Ease management of assembly

Autonomus assembly management by customer or supplier



# BUILD THE MILL

Reduce installation and overall costs

Assurance in installation quality/ efficiency

Faster Investment pay-back due to reduction in installation time during course of the project which lead to a sooner production



THANK YOU!!!

