



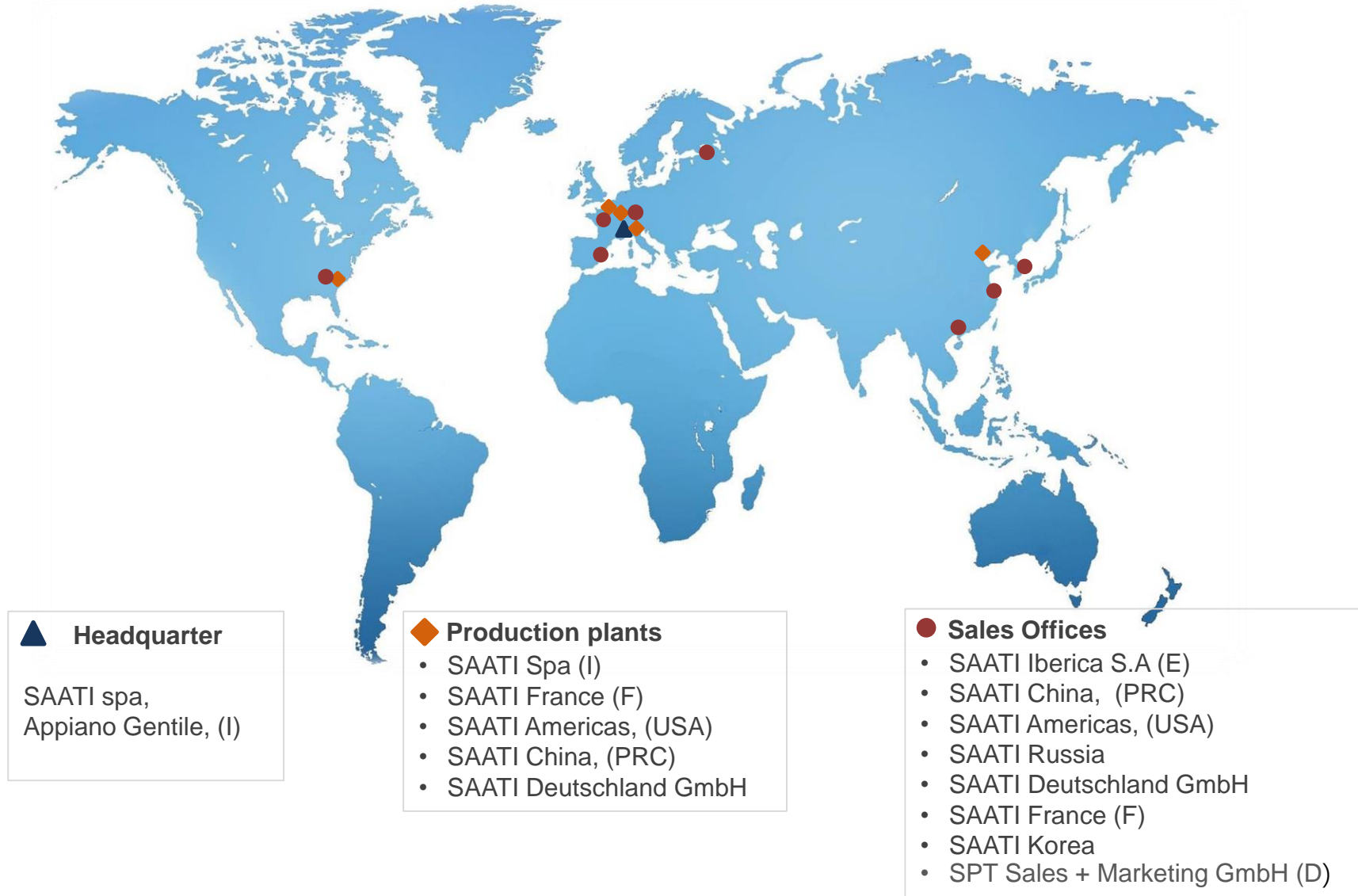
SIEVE STRETCHING AND FRAME PREPARATION

—SAATI

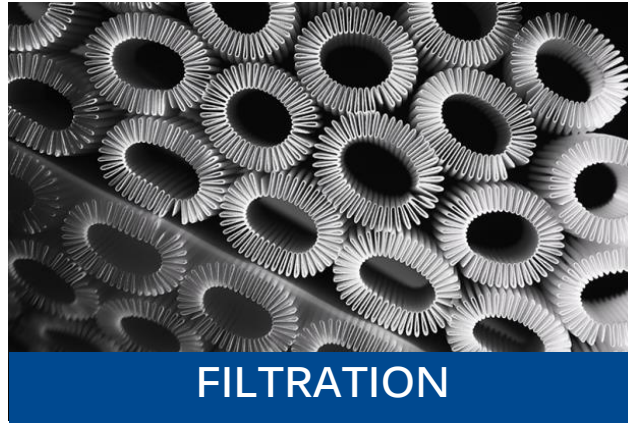
APRIL 2017



- ❖ **Year of foundation:** 1935
- ❖ **Headquarter:** Appiano Gentile (CO), Italy
- ❖ **Business Start:** Products for food production later converted to weaving parachutes WWII
- ❖ **Core business today:** focus on development, production and highly advanced textile and chemical products
- ❖ **Mission:** Blend different technologies and drive competitive knowledge in a customer-based view of the future. We believe in a future shaped by evolutionary innovations stemming from a spirit for exploration.



SAATI is active in the market with **four divisions**, which are focused on specific market niches:



The Divisions - Protection



The Protection Division is focused on the production of fabrics in aramid fiber also treated with water repellency finishing, coated with unique resin systems and laminated for multi-threat protection products, both for personal and light-armoring protection.



SAATI supplies highly precision woven fabrics in Polyester and Polyamide fibers with excellent dimensional stability, uniformity, durability, and enhanced characteristics and performances thanks to special and proprietary finishing treatments.

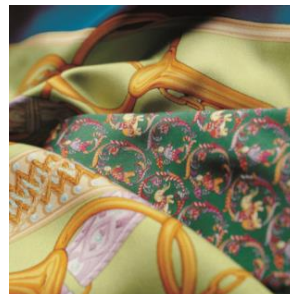
These technical precision fabrics are used in the screen printing process, especially for the following sectors:



GLASS



ELECTRONICS



TEXTILE



GRAPHIC



TILE



CD

The Divisions - Chemicals



SAATI Chemicals formulates and manufacturers:

- Photosensitive films and Emulsions lacquers
- Mesh pretreatments
- Adhesives
- Fillers/blockouts
- Reclaiming chemicals

SAATI offer also includes the



products, a complete range of screen chemicals and solvents.

SAATI – Chemicals' activity till now has been

focused on screen-printing, offering product lines for the most diverse and demanding applications from Display and Industrial Graphics, Textiles, Touch Screen and Printed Circuit Board, Ceramics and Glass.

SAATI-Filtration specializes in the production of technical fabrics and components with special finishing treatments, incorporating the latest in technology to guarantee the highest quality and consistency.

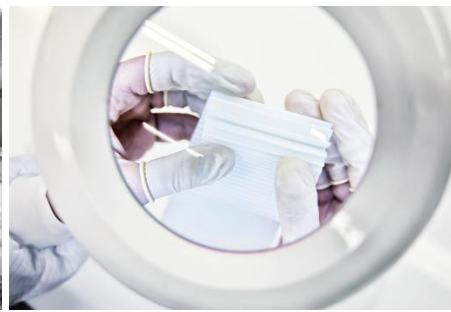
The products are used in a wide range of different fields, such as:



WATER



AUTOMOTIVE



HEALTHCARE



HOME APPLIANCE



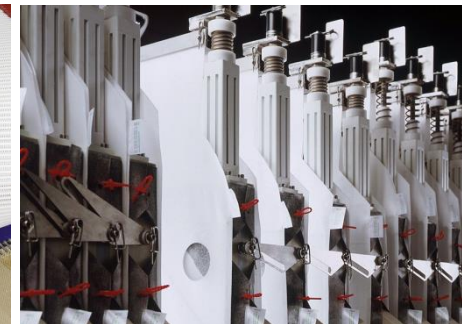
**CONSUMER
ELECTRONICS**



FOOD & MILLING



BELTING



**PROCESS
FILTRATION**



FRAME SURFACE PREPARATION

FRAME PREPARATION / CLEANING FRAME SURFACE



MBX FRAME SURFACE PREPARATION

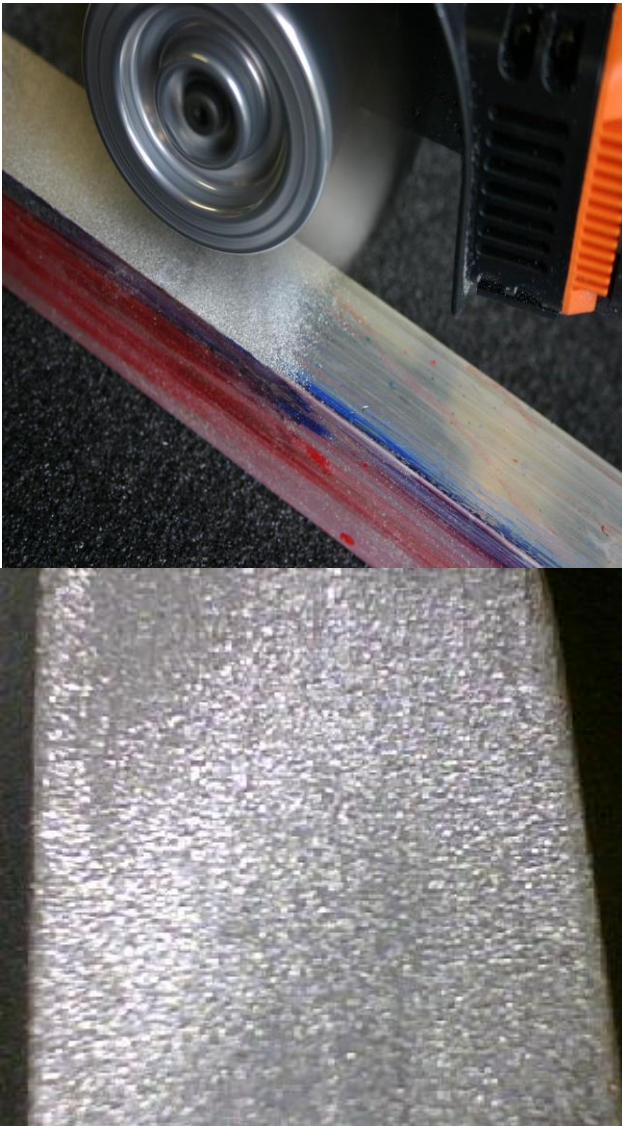


Stretch and Glue 101....







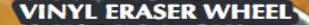
- BEST one-step method to remove mesh and adhesive while texturing the frame surface.
- Operates with a rotary wire belt attached to the front end of the MBX tool.
- The tips of the wire belt are angled forward to grip, tear, and remove buildup, PLUS texture the frame surface in one action.

MBX STEPS FOR SCREEN PREP

1. Safety first! Put on safety glasses
2. Clamp the frame on a level surface
3. Check that wire belt is secure in housing
4. Firmly hold MBX and turn on the tool
5. Place the spinning wire belt in contact with the frame surface, moving MBX side-to-side. You will see the immediate removal of mesh, adhesive, and a textured surface
6. For heavy build-up, repeat Step 5 as needed



Additional
belts
available for
use with MBX
tool

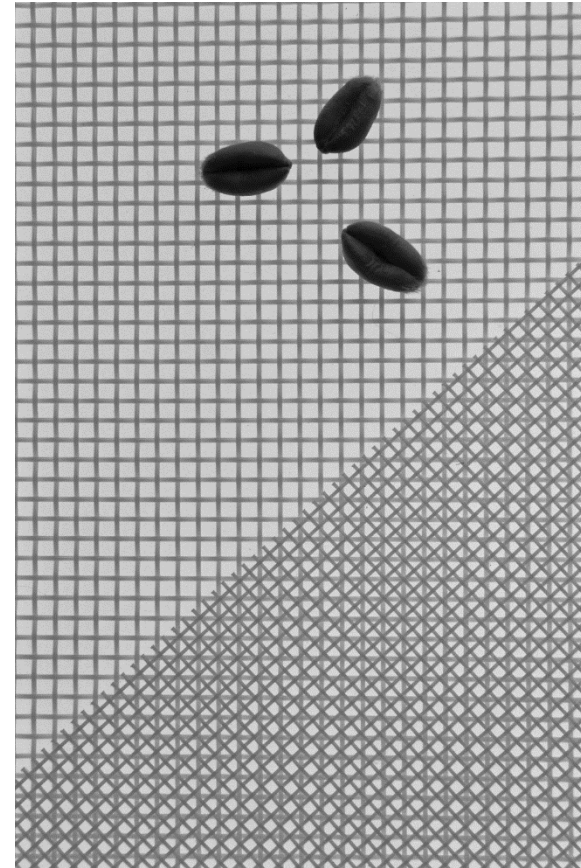
BELTS	SPECIFICATIONS	SIZES	APPLICATIONS
 COARSE STEEL	WIRE 0.7mm carbon spring steel TIPS Angled, hardened and sharpened FINISH Coarse, sandblast-like texture	43mm 23mm 11mm	Remove sealers, coatings Profile steel surfaces Roughen fiberglass, plastic & rubber
 MEDIUM STEEL	WIRE 0.5mm carbon spring steel TIPS Angled, hardened and sharpened FINISH Fine, sandblast-like texture	43mm 23mm 11mm	Remove heavy rust, paint Remove epoxy, marine growth Profile aluminum surfaces
 FINE STEEL	WIRE 0.5mm carbon spring steel TIPS Straight and hardened FINISH Smooth or lightly textured	43mm 23mm 11mm	Remove light rust, paint Remove gasket material Clean contours, nooks & crannies
 MEDIUM STAINLESS	WIRE 0.5mm surgical stainless steel TIPS Angled and hardened FINISH Fine sandblast-like texture	23mm 11mm	Removes paint, corrosion Cleans weld seams, burn & slag Effective for non-ferrous metals
 FINE STAINLESS	WIRE 0.5mm surgical stainless steel TIPS Straight FINISH Smooth or lightly textured	23mm 11mm	Removes paint and oxidation Removes liquid gaskets Cleans weld seams, safe on rivets
 CONCRETE BELT	WIRE 0.8mm spring steel TIPS Straight FINISH Clean, debris free	43mm	Removes concrete residue from metal surfaces Cleans crud and debris
 VINYL ERASER WHEEL	WIRE Rubber compound TIPS Toothed wheel FINISH Clean metal, fiberglass & glass w/o damage to OEM paint or substrate	25mm	Removes vinyl, decals & pinstripes Removes reflective & DOT tape Removes molding & adhesive tape

FABRIC SELECTION

SAATIMil®: Fabrics

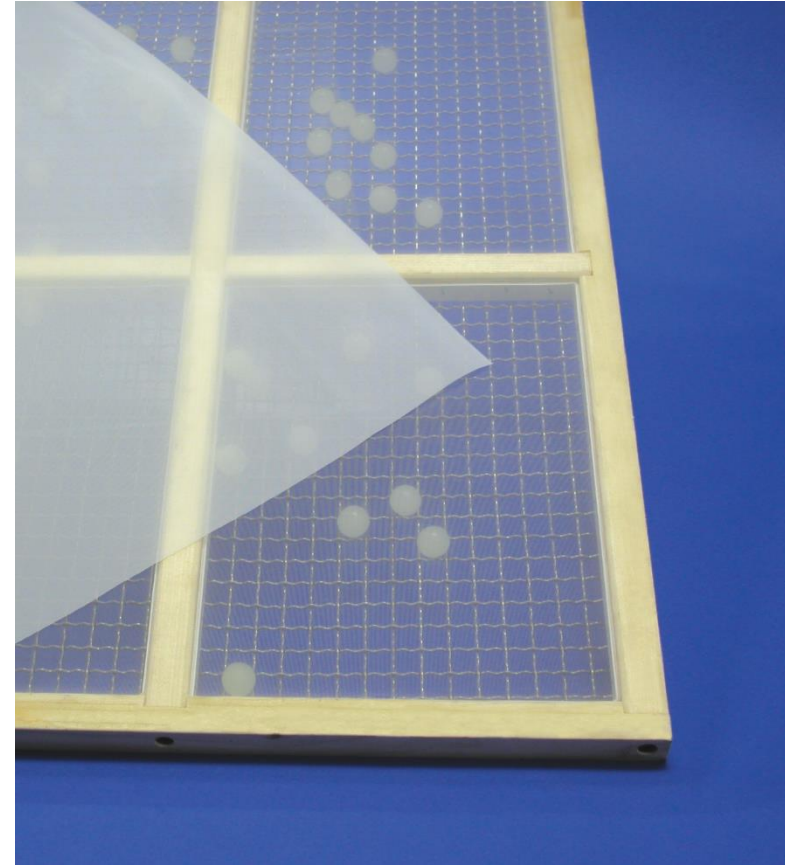
SAATIMil® products are ideal for the screening and separating procedures used in the food, chemical, pharmaceutical, and mining industries.

The SAATIMil® screens are known for their high capacity, longevity, perfect fit, and competitive pricing.

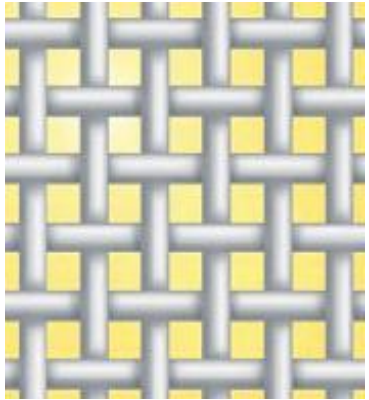


SAATIMil® Screens: advantages

- Monofilament woven fabrics
- Available in synthetic (PA-PES) fibers
- High Open area
- Consistent geometrical tolerances
- Excellent strength and dimensional stability
- High resistance to mechanical stress, abrasion, chemical agents and corrosion
- Lot-to-lot consistency
- Longer screen life
- FDA approved

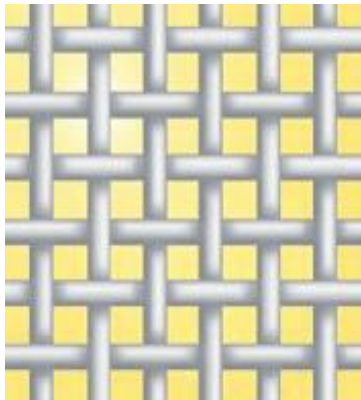


SAATIMil Fabric Range



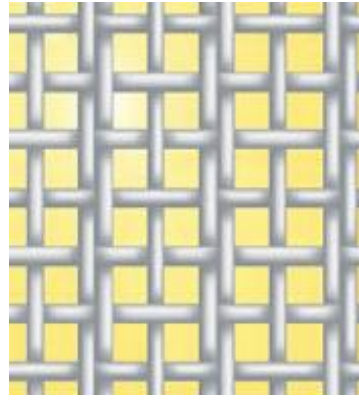
SAATIMIL® XXX

Engineered for hard grades of wheat and durum or other abrasive grains



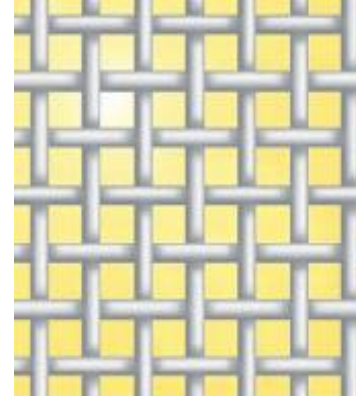
SAATIMIL® GG

Designed to have higher screening capacity



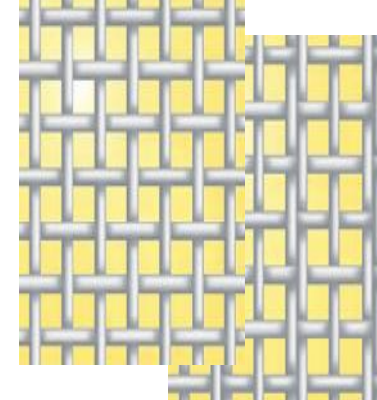
SAATIMIL® XX

Suited for sieving soft wheat, bakery flour and other products that are difficult to sift



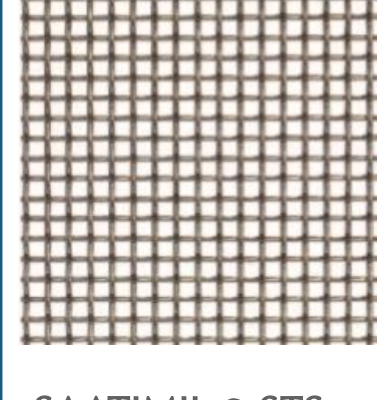
SAATIMIL® HT

Ideal for sifting frames with glued-on-screens requiring high tensile stretching



SAATIMIL® MAR

Absorbant Resistant.
Designed to address Humidity issues.



SAATIMIL® STS WIRE CLOTH

Ideal to accurately sieve abrasive materials



ADHESIVES AND ACTIVATOR TENSION METER

SAATIMiI®: ADHESIVES AND ACTIVATOR



Ultrafix CA Adhesives

Ultrafix Product	Viscosity	Mesh Count Range
Ultrafix CA 150	High	17-196
Ultrafix CA 100	Medium	196-380
Ultrafix CA 50	Low	330-508

SAATIMil®: Tension Meter



Newman ST-Meter

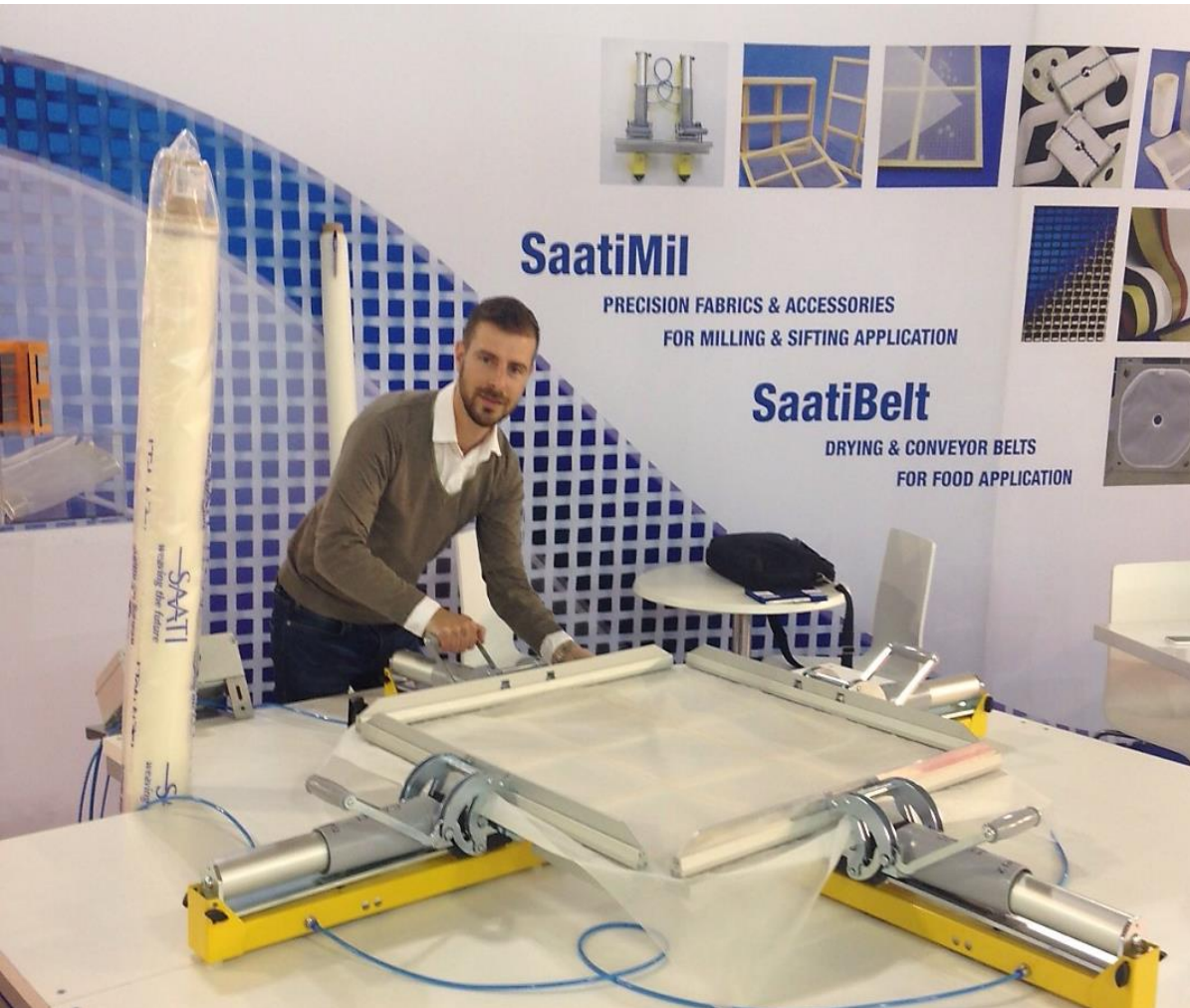
Newman ST-Meter is the only tension meter in the world with all stainless steel hardened gears, shock-proof industrial grade internal gear movement and all jeweled sapphire bearings.

Measuring tension with high quality tension meter can assures screen-to-screen consistency, screen tension uniformity, and accuracy.

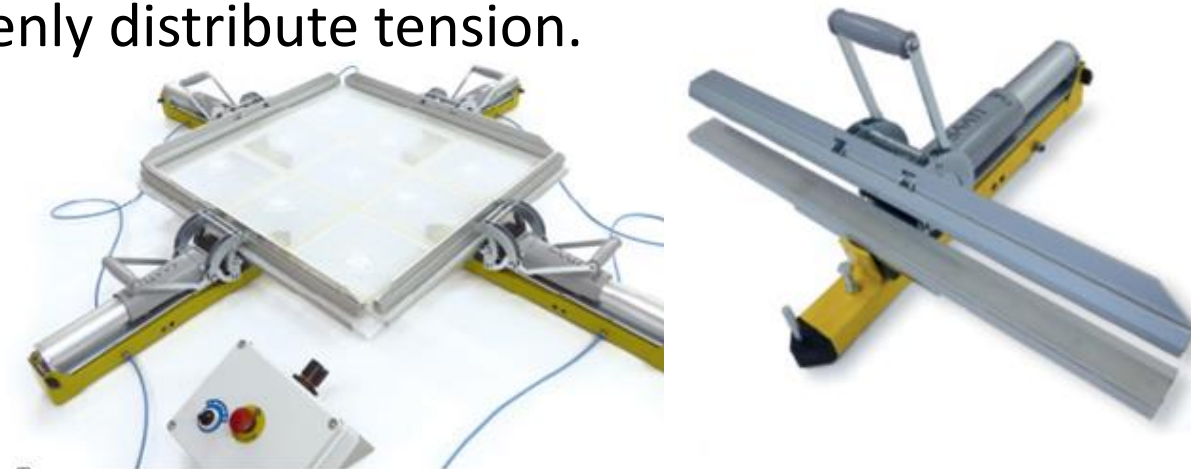


STRETCH AND GLUE PROCESS

SAATIMil®: STRETCHING SYSTEM

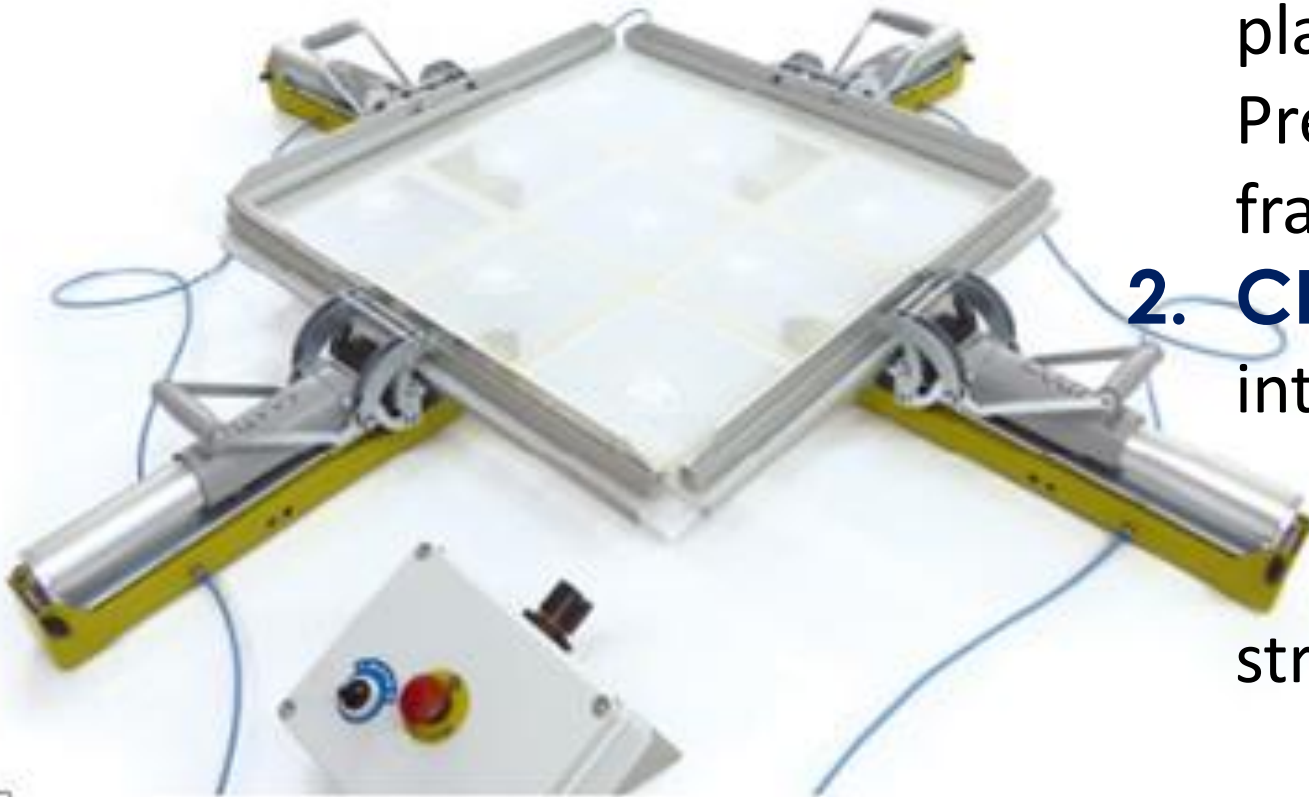


Most efficient method to stretch milling and screening fabrics to their optimum tension. Only one clamp per side. Clamps are available in three jaw widths. The entire body is covered to prevent anything from getting caught in the moving parts. Control panel daisy chained to each clamp to evenly distribute tension.



STRETCH & GLUE PROCESS

- 1. FRAME PLACEMENT** Place your clean, textured frame on top of the aluminum plate set the frames onto the plate. Pressure is applied to the plate and the frame.
- 2. CLOTH PLACEMENT** align the mesh into the stretcher as square to the clamps as possible. Allow the clamps to fully grasp the material while stretching.



STRETCH & GLUE PROCESS

3. LOCK CLAMPS Start on one side to lock down the milling clamp completely. Inspect for pinching or wrinkles between clamps. Next, lock fabrics on the opposite side. Inspect again, SAATIMil fabric is square, and free of wrinkles or pinch points. Lock the remaining two clamps in place. Final inspection to be sure fabric is smooth and free of folds, wrinkles or pinches.



STRETCH & GLUE PROCESS

- 4. TENSIONING** Turn tension knob on the control panel. Clamps will move outward tensioning the SAATIMil fabric. Keep cloth under tension and measure with tension gauge in both directions. If your mesh tension is within the guidelines, you can then move to the next step in the process.



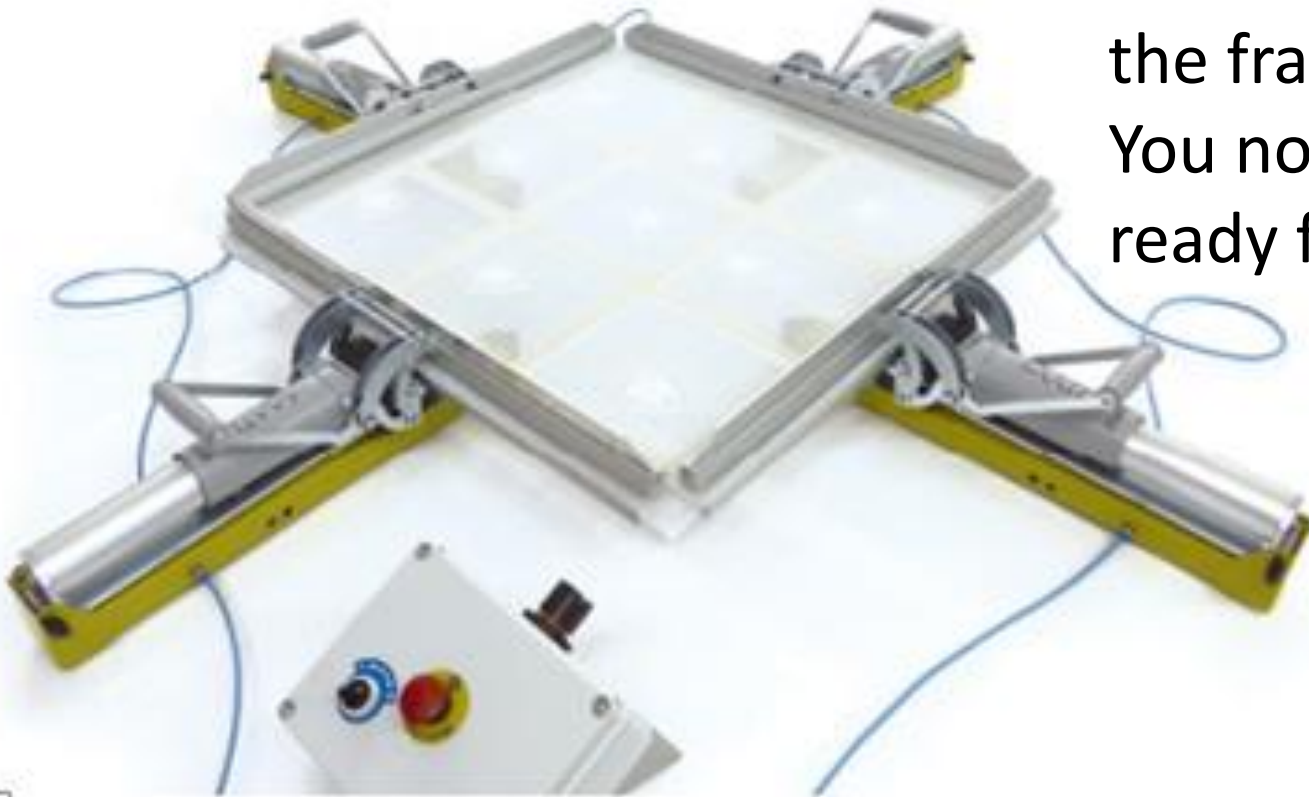
STRETCH & GLUE PROCESS

5. APPLICATION OF ADHESIVE While your mesh is under tension, apply adhesive along the center of the frame edge. Spread to full width of the frame edge. Once the adhesive is applied, spray a light spritz of Activator directly on the adhesive. This should cure the adhesive immediately.



STRETCH & GLUE PROCESS

6. COMPLETION You may now release the tension, unlock the clamps and remove the frame. Trim the excess SAATIMil fabric. You now have a frame with tensioned mesh ready for installation.



Thank you!

Debbie Copelan
dcopelan@saati.com
Cell: 224-213-6325